

Tube Holes per Row

(1) 7/16" DIA TUBESHEET DRAIN

MM

Shell I.D.

Baffle Dia.

7

8

9

10

9

10

9

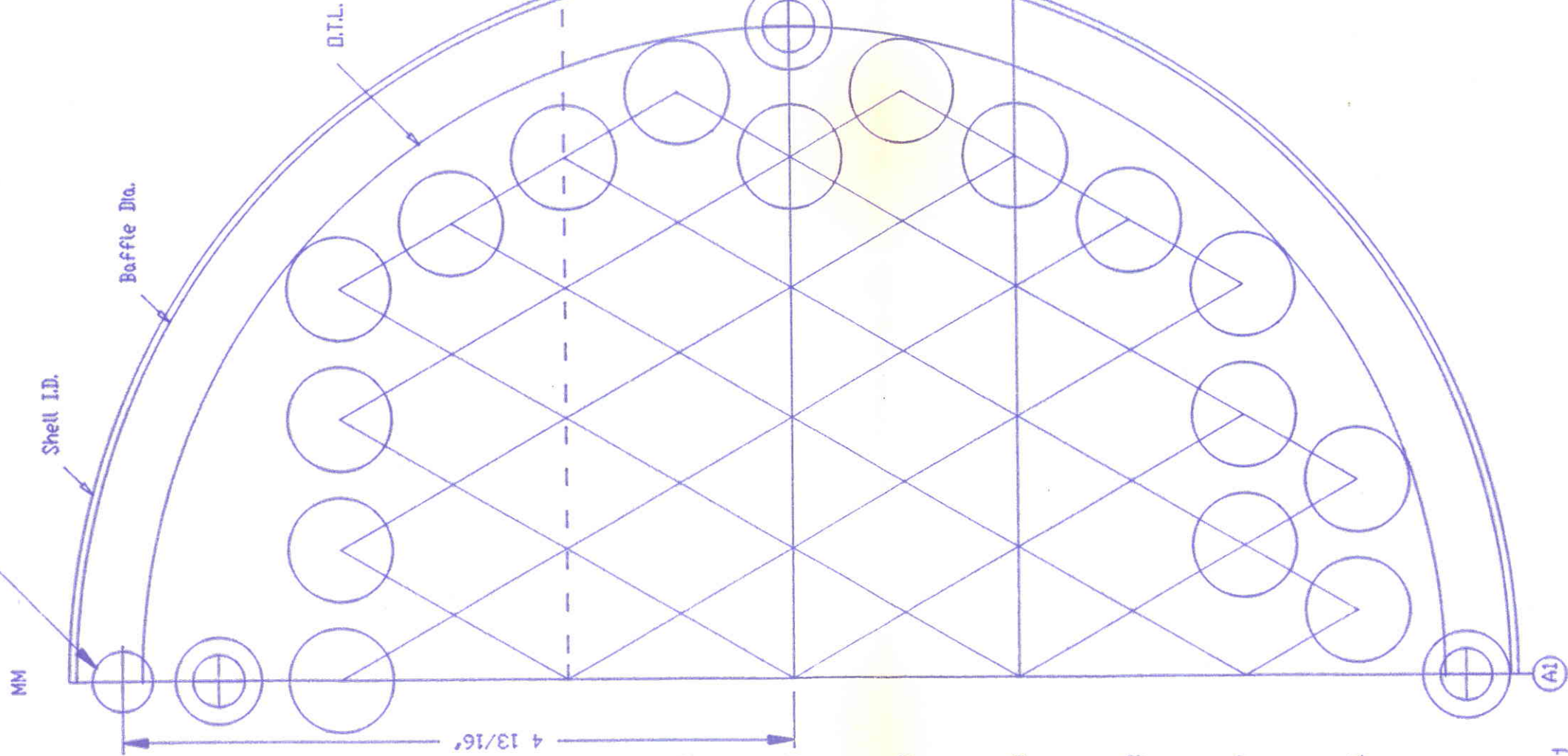
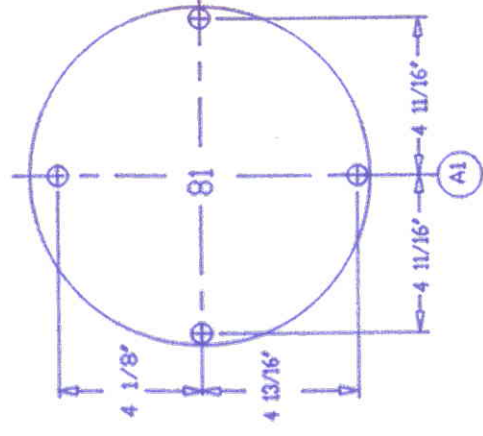
8

7

4

BT-21888

Tubes per Pass  
Tie Rod Locations



BREAK THREADS ON TIE RODS AFTER CAGE IS TIGHT

ELEVATION VIEW

TUBE TYPE	STRAIGHT
HOLE DIA.	.7812" $\pm$ .010" $\begin{smallmatrix} +.010 \\ -.000 \end{smallmatrix}$
SPACER SIZE	5/8" DD
Number of Tube Holes	81
Shell Inside Diameter	10.42'
Outer Tube Limit	9 3/8'
Tube Outside Diameter	3/4'
Tube Pitch	15/16'
Tube Pattern	Triangular
Tube Passes	1
Number of Tie Rods	4
Tie Rod Diameter	3/8'
Baffle Outside Diameter	10 5/16'
Baffle Type	Single Segmental
Baffle Cut	34 % H
Baffle Cut From Center	A 1 5/8'
B	-1 5/8'
IMP. NOZZLE	---
BAFFLE MATL.	SS-304
HT. ENT. AREA	1 9/16'
HT. EXIT AREA	1 9/16'
BAFFLE TK.	1/8'
NO. OF BAFFLES	31
JOB NO.	---
DRAWING REF. NO.	269930
D-21887	---

MANNING & LEWIS

675 RAHWAY AVENUE UNION N.J. 07083

TUBE FIELD

CBI No.-CON, INC.

10-264 LNG VAPORIZER

SCALE	MADE	CKD.	DATE	DRAWING NO.	REV.
1:0.98	SSR	JB	12.28.92	BT-21888	0