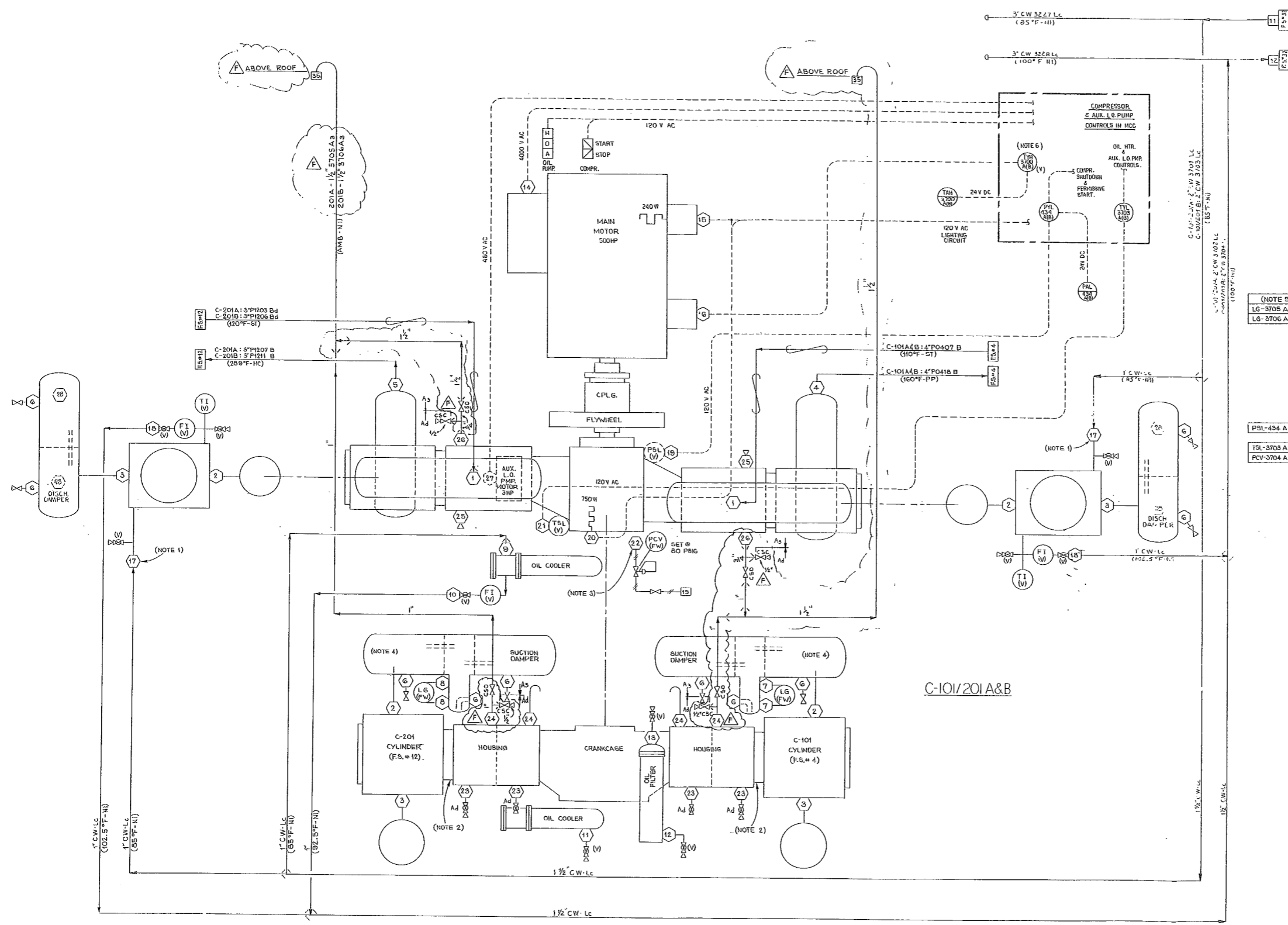


REF. NO.	DRAWING NO.	DRAWING TITLE
1	W-200B17 R	COMPOSITE ARRANGEMENT
2	661-16-208	C-101A/B SUCTION DAMPER
3	621-16-262	C-101A/B DISCHARGE DAMPER
4	661-16-209	C-201A/B SUCTION DAMPER
5	621-16-263	C-201A/B DISCHARGE DAMPER
6	9509 D 80	MAIN MOTOR OUTLINE
7	X-20X1901	FLOW SCHEMATICS
8	20K1910	INSTRUMENT LIST
9	W-244900 NV	CONTROL, COMPLETE
10	20K1902	CONTROL DEVICES INSTR. LIST
11	A-5-046-06-036-033	OIL COOLER OUTLINE
12	BF-717-266	OIL COOLER DATA SHEET
13	11-457	OIL FILTER ASSEMBLY
14	RX-145603 R5	OIL PUMP & MOTOR ASSY.
15	2335 F WEA., PG. 21	OIL PUMP MOTOR OUTLINE
16	Y-346312 KX	MANUAL CONTROLLER
17		
18		
19		
20		

PURCH. CONN.	SIZE & TYPE	SERVICE	VENDOR DWG. REF. NO.
1	4"300"RF	C-101/201 SUCTION DAMPER INLET	1, 2, 4
2	6"600"FF	C-101/201 CYLINDER INLET	2, 4
3	6"600"FF	C-101/201 CYLINDER DISCHARGE	3, 5
4	4"300"RF	C-101 DISCHARGE DAMPER OUTLET	1, 3
5	3"300"RF	C-201 DISCHARGE DAMPER OUTLET	1, 5
6	1" SW	C-101/201 SUCTION/ DISCHARGE DAMPER DRAIN	2, 3, 4, 5
7	3/4" SW	C-101A/B SUCTION DAMPER LEVEL GAGE	2
8	3/4" SW	C-201A/B SUCTION DAMPER LEVEL GAGE	4
9	2" FPT	OIL COOLER C.W. INLET	1, 11, 12
10	1" FPT	OIL COOLER C.W. RETURN	1, 11, 12
11	3/8" FPT	OIL COOLER SWELL-SIDE (OIL) DRAIN	11
12	3/4" FPT	OIL FILTER DRAIN	13
13	3/4" FPT	OIL FILTER VENT	13
14	3" FPT	MAIN MOTOR POWER CONDUIT	1, 6
15	3/4" FPT	MAIN MOTOR SPACE HEATER CONDUIT	1, 6
16	3/4" FPT	MAIN MOTOR THERMISTOR CONDUIT	1, 6
17	1" FPT	CYLINDER JACKET C.W. INLET	1
18	1" FPT	CYLINDER JACKET C.W. RETURN	1
19	3/4" MPT	LUBE OIL LOW PRESSURE SWITCH CONDUIT	1, 10
20	1/2" FPT	CRANKCASE OIL HEATER CONDUIT	1, 10
21	1/2" MPT	CRANKCASE OIL THERMOSTAT CONDUIT	1, 10
22	1/2" FPT	CYL. UNLOADER OPERATING AIR	1, 9
23	1" FPT	HOUSING DRAIN	1
24	1" FPT	HOUSING VENT	1
25	3/4" FPT	CYLINDER PACKING PURGE (PLUG)	1
26	3/4" FPT	CYLINDER PACKING VENT	1
27	3/4" FPT	AUX. L.O. PUMP MOTOR CONDUIT	1, 14, 15
28	1/2"600"*	HRFECTION 1"ST	
29			
30			



C-101/201 A&B

ITEM NO.	DESCRIPTION	ITEM NO.	DESCRIPTION	ITEM NO.	DESCRIPTION
1	COOLING WATER SUPPLY	11	STEAM CONDENSATE	21	PROCESS CONDENSATE
2	COOLING WATER RETURN	12	TREATED WATER	22	RAW WATER
3	WSP HP STEAM	13	PLANT AIR	23	PIPELINE GAS (NITROGEN)
4	LEAF ATOMIZED STEAM	14	INSTRUMENT AIR	24	SANITARY WASTE
5	EQP LP STEAM	15	STEAM CONDENSATE	25	GENICAL WASTE
6		16	FUEL OIL (NATURAL GAS)	26	BLENDING WASTE
7		17	FUEL OIL (NATURAL GAS)	27	SANITARY SEWER
8		18	CLEAN WATER SEWER	28	FIRE WATER
9		19		29	FLUSHING OIL
10		20		30	

**PHILADELPHIA GAS WORKS**  
ENGINEERING DEPT. PHILADELPHIA, PA.

W.D. \_\_\_\_\_ P.W. Dwg. No. **12-A-222**

APPROVED \_\_\_\_\_

ITEM NOS. THIS DWG. **C-101/201 A&B**

**FOSTER WHEELER ENERGY CORPORATION**  
110 SOUTH GRANDE AVENUE, LIVINGSTON, N.J.  
THIS DRAWING IS THE PROPERTY OF THE CORPORATION AND IS NOT TO BE REPRODUCED, COPIED, LOANED, OR OTHERWISE USED IN ANY MANNER WITHOUT THE WRITTEN PERMISSION OF THE CORPORATION. THE APPLICABLE PATENTS ARE COVERED BY PATENTS.

**AUXILIARY FLOW DIAGRAM**  
COMPRESSORS C-101, C-201 A&B  
SECTIONS 100 AND 200  
60 MMSCFD SNG PLANT  
PHILADELPHIA GAS WORKS  
PHILADELPHIA, PENNSYLVANIA

EST. NO. \_\_\_\_\_ DRAWN BY: [Signature] 2-C-22 15/47 OF 41  
CONTRACT NUMBER: 15-1779 DWG. NO. 1779-1-50-37