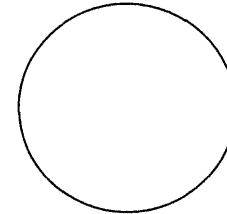
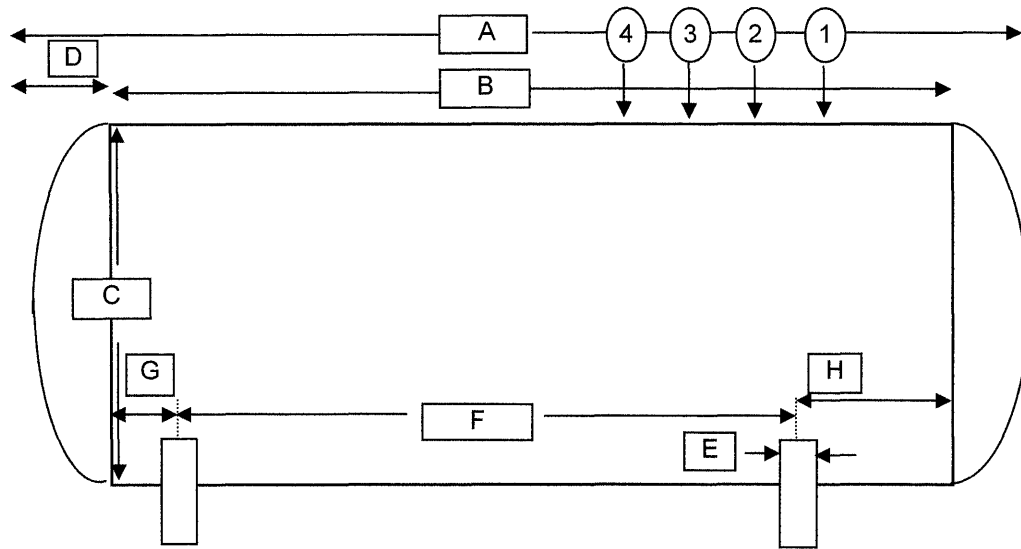


Manway Cover Detail



Outside Dia	26"
No of bolts:	20
Bolt length:	7"
Bolt dia.:	3/4"
Nom. size:	18"
Rating:	150#
Type:	Special

Special gasket required



Inches from Head Seam

CODE PLATE MISSING

U-1 on hand **Yes**
 Heat Treat **Yes**
 X-Ray **Complete**

Tank Openings

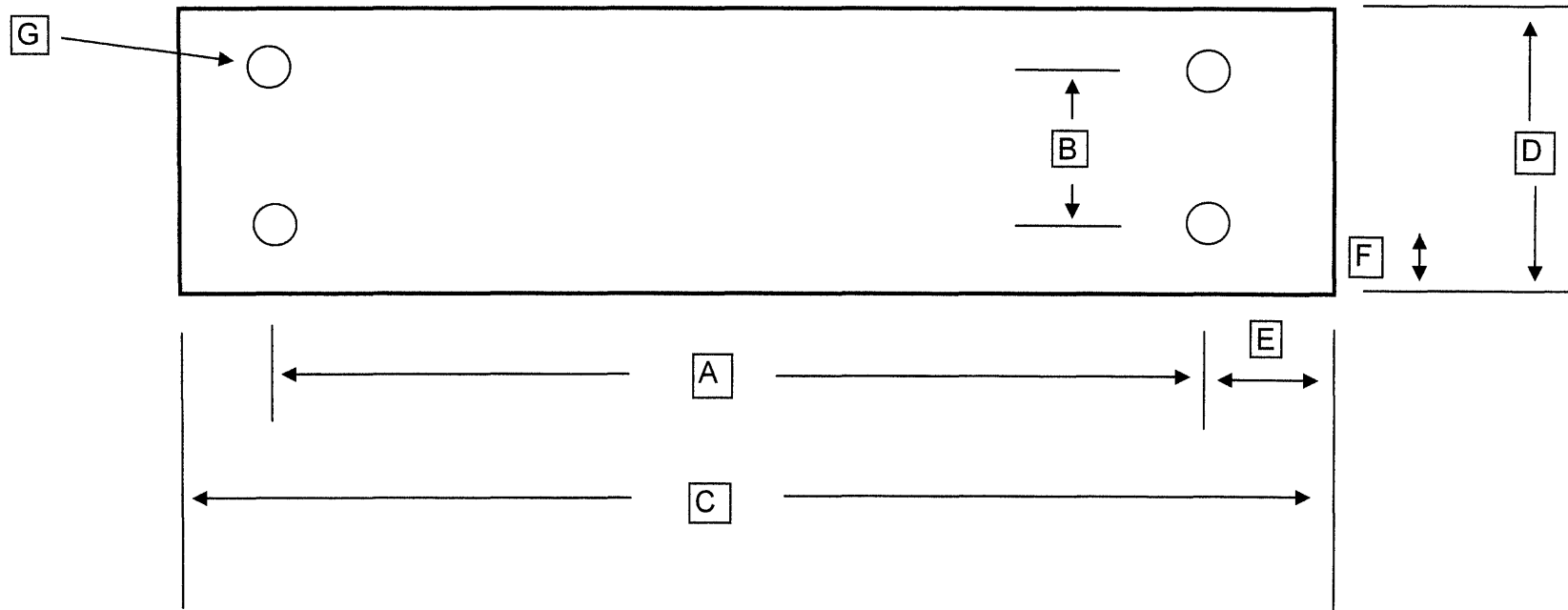
Tank Details

Description		Dimensions	
O/A Length		A -	120'
Length - weld to weld		B -	109'
Diameter of Tank	O. D.	C -	11'-0"
Weld to End		D -	5' 6"
Width of Piers		E -	16"
C/C of Piers		F -	104' 7"
C/L of Piers to Weld end		G -	2' 2-1/2"
		H -	2' 2-1/2"

No Size Type

No Size Type				Description	Tank Details			
1	18"	Spcl	54	Manway (ported per detail)	Manufacturer:	AMF Beard	Type of Head	Hemi
2	18"	Spcl	128	Manway (no ports)	Date of manufacture	1967		
3	4"	300#	164	Vapor			Tank Capacity	USWG 80,020
4	4"	300#	182	Vapor	Working Pressure	266	Tank Weight	estimated 170,000
5					National Board Number	82375	Tank Shell	1
6					Serial Number	150712-2	Tank Head	9/16"
7					Steel Type:	SA-212		
8							Pier Type (Concrete / saddles / Flat)	Flat
9					Jurisdiction #		Tank Saddles	Welded to shell
10					Pressure Gauge	None		
11					Liquid Level Gauge	None		
12					Thermometer	None		
13					Paint Condition:	None		
14					Color:			
15							Information taken by:	From Dwg
16					Relief Valve Type	None	Date:	1/12/2007
17					Test Date		Tank Location	Baton Rouge

Steel Saddle Footprint Sketch



	Bottom of foot plate to shell	6"
	Number of bolt holes	4
A	Center to center of bolt holes	8' 6"
B	Center to center of bolt holes	5-1/2"
C	Outside plate dimension	9' 8"
D	Outside plate dimension	10"
E	Center of hole to edge of plate	2-1/4"
F	Center of hole to edge of plate	7"
G	Bolt Hole Diameter	1-1/8"