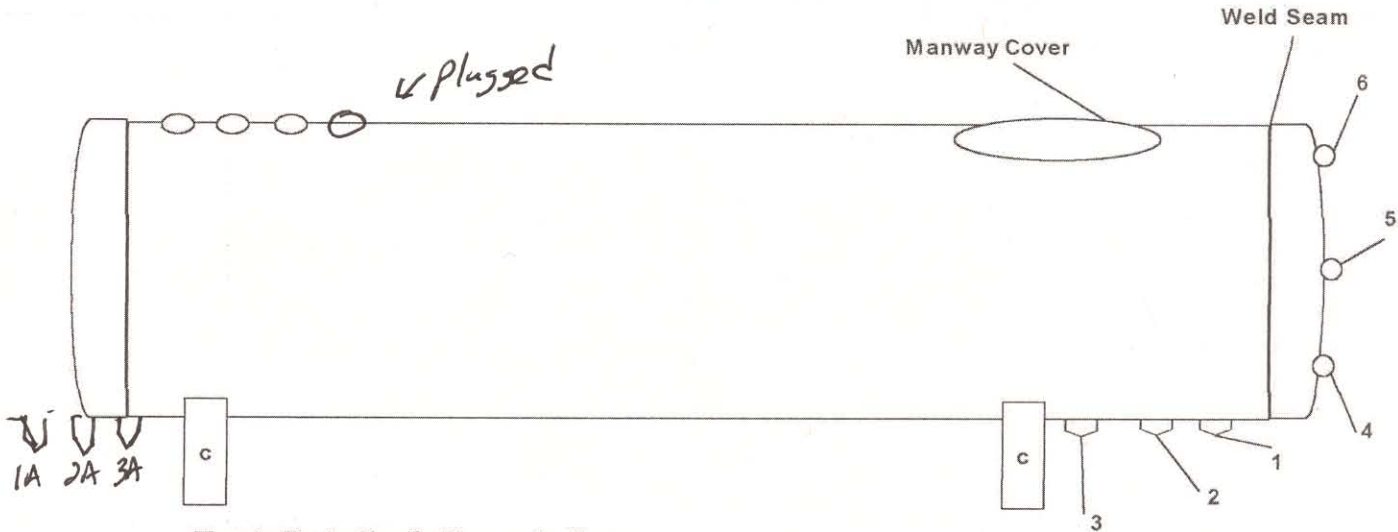


Total Energy Corp Tank Sketch



Tank Details & Description

| | |
|---|---|
| Manufacture | Trinity |
| Date Of Manufacture | 1973 |
| Working Pressure | 250 |
| National Brd # | 67481 |
| Serial # | |
| Steel Type: | |
| Overall Length | 65' 11.375" |
| Overall Diameter | 9' 1" |
| Bottom Openings | |
| (1) size & type | 3" |
| (2) size & type | 2" |
| (3) size & type | 2" |
| Center to Center Pier | 42" |
| Distance from Weld Seam to bottom opening 1 | weld seam to 1 = 12" |
| Distance between bottom openings 1,2,3 | 1 to 2 = 12" 2 to 3 = 12" 3 to Pier = 46" |
| Tank Saddles Concrete / Welded | Concrete |
| Tank Heads Hemi / Elliptical | |
| Multi Port / Internal Relief Valves | |
| Liquid Level Gauge | yes |
| Roto Gauge | yes |
| Temp gauge | yes |
| Tank Shell Thickness | |
| Tank Head Thickness | |
| Tank Capacity | 30,000 |
| Tank Weight | |

Manway Cover Detail

| | |
|-----------------------------|--------|
| No of Bolts | 16 |
| Bolt Diameter | 1 1/8" |
| Manway Openings | 16" |
| Size of multi port openings | |
| Overall Diameter | 25" |

1. Please add any other openings on the tank drawing if they are not present.

NOTES

Tank 5

1A-3" > 12"
2A-2" > 12"
3A-2" > 44"
P:V > 44"