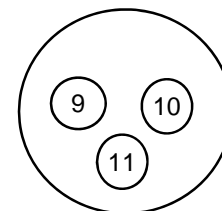


Manway Cover Detail



Outside Dia	25"
No of bolts:	16
Bolt length:	7-1/2"
Bolt dia.:	1"
Nom. size:	18"
Rating:	150#
Type:	Pad

U-1 on hand N
 Heat Treat N
 X-Ray Y

Tank Openings

Tank Details

Description

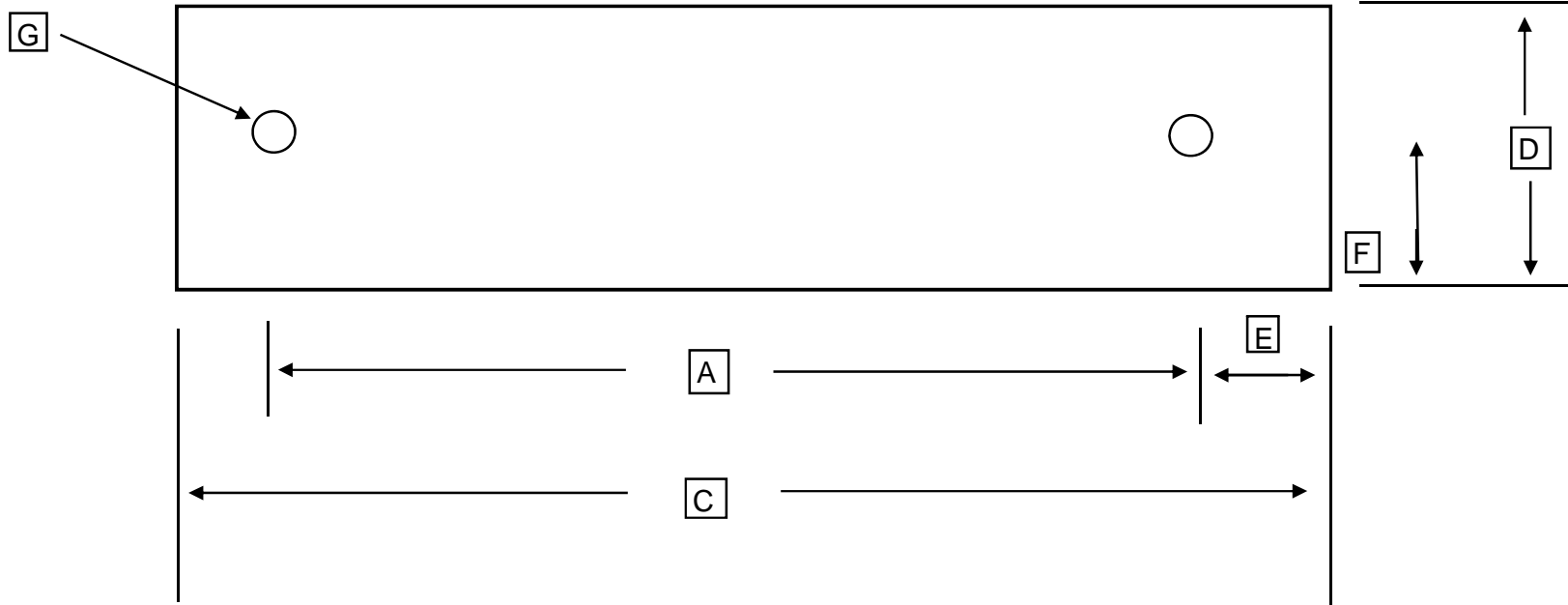
Dimensions

O/A Length	A -	90' 8"
Length - weld to weld	B -	79' 2"
Weld to End	C -	11'
Width of Piers	D -	5' 2-1/2"
C/C of Piers	E -	16
C/L of Piers to Weld end	F -	69' 1-1/2"
	G -	67"
	H -	67"
Ht. Of tank above grade	K -	3'

No Size Type

Description

1	3"	Thd 300	6.5"	Liquid Draw	Manufacturer:	Trinity	Type of Head	Hemi
2	3"	Thd 300	26"	Liquid Inlet	Date of manufacture	1970		
3	2"	Thd 300	44"	Vapor			Tank Capacity	USWG
4	3/4"	NPT		Thermowell	Working Pressure	250 psi @ 125 F	Tank Weight	estimated
5					National Board Number	None	Tank Shell	
6	2-1/2"	Weld		Magnatel	Serial Number	373208	Tank Head	
7	3/4"	NPT		Pressure Gauge	Steel Type:	SA-515-70 / SA-455		
8	18"	300#	40"	Manway			Pier Type	(Concrete / saddles / Flat)
9	3"	300#		MultiPort Mount	Jurisdiction #		Tank Saddles	Steel NOT welded to shell
10	3"	300#		MultiPort Mount	Pressure Gauge	0-300		
11	3"	300#		Spare	Liquid Level Gauge	Magnatel and Roto	Surface Area	3130 sq. ft.
12	1"	NPT		RotoGage	Thermometer	Dial		
13					Paint Condition:	Excellent		
14					Color:	White		
15							Information taken by:	Gene B.
16					Relief Valve Type	MultiPort	Date:	4/14/2006
17					Test Date		Tank Location	Columbia SC #12



		Number of bolt holes	2
A		Center to center of bolt holes	96"
C		Outside plate dimension	116"
D		Outside plate dimension	12"
E		Center of hole to edge of plate	10"
F		Center of hole to edge of plate	6"
G		Bolt Hole Diameter	1-1/4"