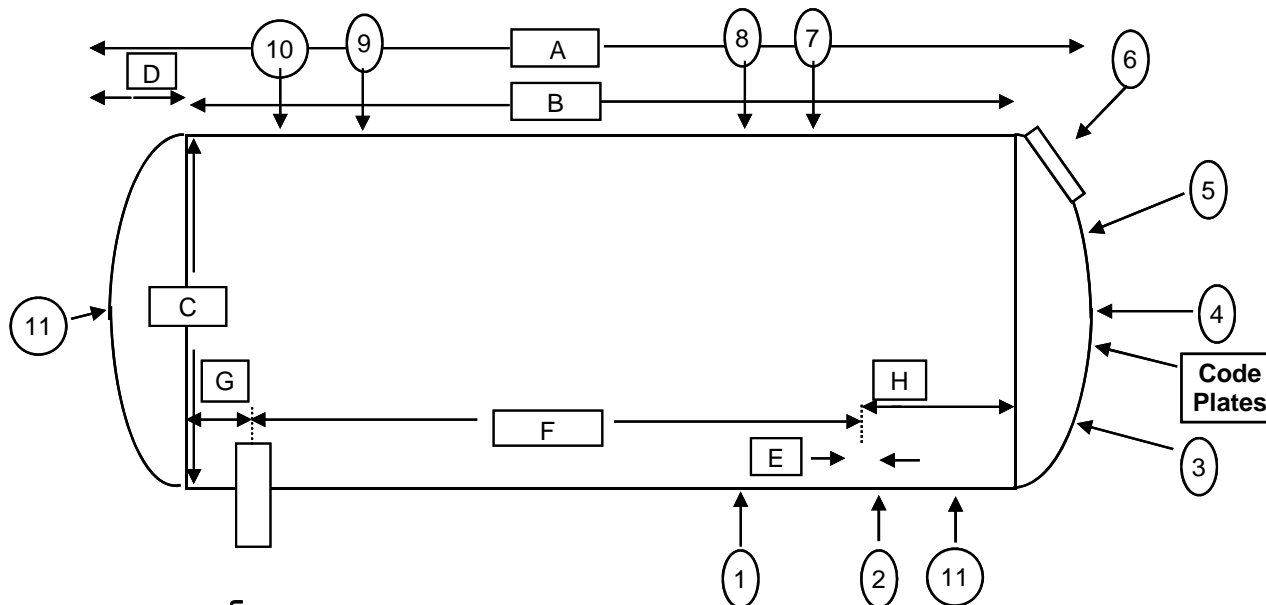
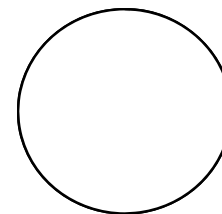


Total Energy Corp

Tank Sketch of field Information



Manway Cover Detail



Outside Dia	23-1/2"
No of bolts:	16
Bolt length:	5"
Bolt dia.:	1"
Nom. size:	16"
Rating:	150#
Type:	Pad

Note: Tank shell was shortened from original by 4' 9-1/2"
Pier location "E" is no longer on the shell

Inches from Head Seam

R-2 on hand **YES**
U-1 on hand **YES**
Heat Treat **NO**
X-Ray **COMPLETE**

Description

O/A Length	A -	129' 3"
Length - weld to weld	B -	118' 2-1/2"
	C -	131-5/8"
Weld to End	D -	5' 6"
Width of Piers	E -	18"
C/C of Piers	F -	
C/L of Piers to Weld end	G -	2' 6"
	H -	

Tank Openings

Tank Details

No	Size	Type	Description	Tank Details		Description	
1	4"	300#	45-1/2" Liquid OUT	Manufacturer:	Trinity	Type of Head	Hemi
2	3"	NPT	12" Liquid OUT	Date of manufacture	1976		
3	3/4"	NPT	Hd Thermowell			Tank Capacity	USWG 86,480
4	2-1/2"	Wld	Hd Magnatel mount	Working Pressure	250 psi	Tank Weight	estimated 172,000
5	3/4"	NPT	Hd Max-fill / pressure combo	National Board Number	77121	Tank Shell	.8125"
6				Serial Number	608407	Tank Head	.527"
7	3"	300#	13" Vapor	Steel Type:	SA-612B		
8	2"	NPT	36-1/2" Liquid IN			Pier Type (Concrete / saddles / Flat)	Concrete
9	4"	300#	24" MultiPort	Jurisdiction #		Tank Saddles	NONE
10	4"	300#	12" MultiPort	Pressure Gauge	0 - 300 psi		
11	3"	NPT	30" Liquid	Liquid Level Gauge	Roto-Gage		
12	1"	NPT	Hd Roto-Gage mount		No MagnaTel		
13				Paint Condition:	None		
14				Color:			
15						Information taken by:	Gene Botts
16				Relief Valve Type	MultiPort	Date:	7/29/2009
17				Test Date	Unknown	Tank Location	Madison, Wisconsin