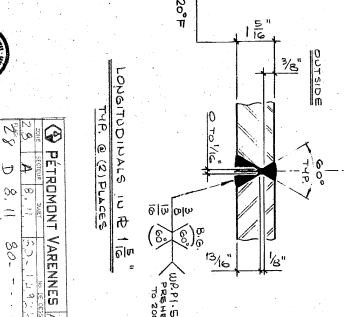
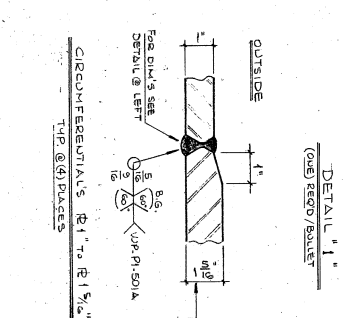
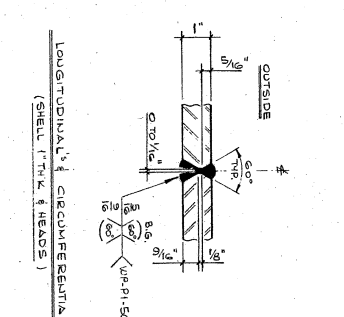
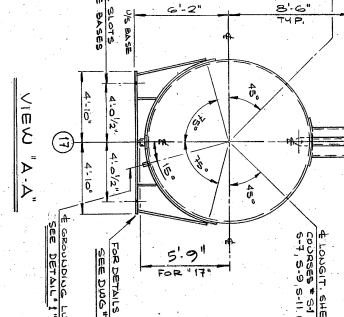


ELEVATION OF PROPANE STORAGE BULLETS (6) REQ'D
ELEVATION OF PROPYLENE STORAGE BULLETS (6) REQ'D
(12) REQ'D TOTAL



NO.	QTY	SIZE	DESCRIPTION	UNIT	QTY
1	1	6"	300' R.F. 2"	SO. GROUND	1
2	1	6"	300' R.F. 2"	SO. GROUND	1
3	1	6"	300' R.F. 2"	SO. GROUND	1
4	1	6"	300' R.F. 2"	SO. GROUND	1
5	1	6"	300' R.F. 2"	SO. GROUND	1
6	1	6"	300' R.F. 2"	SO. GROUND	1
7	1	6"	300' R.F. 2"	SO. GROUND	1
8	1	6"	300' R.F. 2"	SO. GROUND	1
9	1	6"	300' R.F. 2"	SO. GROUND	1
10	1	6"	300' R.F. 2"	SO. GROUND	1
11	1	6"	300' R.F. 2"	SO. GROUND	1
12	1	6"	300' R.F. 2"	SO. GROUND	1
13	1	6"	300' R.F. 2"	SO. GROUND	1
14	1	6"	300' R.F. 2"	SO. GROUND	1
15	1	6"	300' R.F. 2"	SO. GROUND	1
16	1	6"	300' R.F. 2"	SO. GROUND	1
17	1	6"	300' R.F. 2"	SO. GROUND	1
18	1	6"	300' R.F. 2"	SO. GROUND	1
19	1	6"	300' R.F. 2"	SO. GROUND	1
20	1	6"	300' R.F. 2"	SO. GROUND	1
21	1	6"	300' R.F. 2"	SO. GROUND	1
22	1	6"	300' R.F. 2"	SO. GROUND	1
23	1	6"	300' R.F. 2"	SO. GROUND	1
24	1	6"	300' R.F. 2"	SO. GROUND	1
25	1	6"	300' R.F. 2"	SO. GROUND	1
26	1	6"	300' R.F. 2"	SO. GROUND	1
27	1	6"	300' R.F. 2"	SO. GROUND	1
28	1	6"	300' R.F. 2"	SO. GROUND	1
29	1	6"	300' R.F. 2"	SO. GROUND	1
30	1	6"	300' R.F. 2"	SO. GROUND	1

DRUMMOND WELDING & STEEL WORKS, INC.
MANUFACTURED BY / DESIGNED BY
DRUMMOND WELDING & STEEL WORKS, INC.
1200 W. 11TH ST. S.W. ALBUQUERQUE, N.M. 87102
TEL: (505) 263-1111 FAX: (505) 263-1112
WWW.DRUMMONDWELDING.COM

GENERAL NOTES:
1. REFER TO DRAWING FOR ALL DIMENSIONS AND TOLERANCES.
2. ALL DIMENSIONS ARE TO FACE UNLESS OTHERWISE SPECIFIED.
3. ALL WELDING SHALL BE DONE IN ACCORDANCE WITH THE WELDING CODE SPECIFIED IN THE MATERIAL SPECIFICATIONS.
4. THE CONTRACTOR SHALL BE RESPONSIBLE FOR OBTAINING ALL NECESSARY PERMITS AND INSURANCE.
5. THE CONTRACTOR SHALL BE RESPONSIBLE FOR PROTECTING ALL EXISTING UTILITIES AND STRUCTURES.
6. THE CONTRACTOR SHALL BE RESPONSIBLE FOR MAINTAINING ACCESS TO ALL ADJACENT PROPERTIES.
7. THE CONTRACTOR SHALL BE RESPONSIBLE FOR CLEANING UP ALL DEBRIS AND WASTE.
8. THE CONTRACTOR SHALL BE RESPONSIBLE FOR PROTECTING ALL EXISTING UTILITIES AND STRUCTURES.
9. THE CONTRACTOR SHALL BE RESPONSIBLE FOR MAINTAINING ACCESS TO ALL ADJACENT PROPERTIES.
10. THE CONTRACTOR SHALL BE RESPONSIBLE FOR CLEANING UP ALL DEBRIS AND WASTE.

WELDING NOTES:
1. WELDING SHALL BE DONE IN ACCORDANCE WITH THE WELDING CODE SPECIFIED IN THE MATERIAL SPECIFICATIONS.
2. ALL WELDS SHALL BE FULL PENETRATION BUTT JOINTS.
3. ALL WELDS SHALL BE DONE IN ACCORDANCE WITH THE WELDING CODE SPECIFIED IN THE MATERIAL SPECIFICATIONS.
4. ALL WELDS SHALL BE DONE IN ACCORDANCE WITH THE WELDING CODE SPECIFIED IN THE MATERIAL SPECIFICATIONS.
5. ALL WELDS SHALL BE DONE IN ACCORDANCE WITH THE WELDING CODE SPECIFIED IN THE MATERIAL SPECIFICATIONS.

REV.	DESCRIPTION	DATE	BY
1	ISSUED FOR CONSTRUCTION	10/1/01	JAN
2	REVISION	10/1/01	JAN
3	REVISION	10/1/01	JAN
4	REVISION	10/1/01	JAN
5	REVISION	10/1/01	JAN
6	REVISION	10/1/01	JAN
7	REVISION	10/1/01	JAN
8	REVISION	10/1/01	JAN
9	REVISION	10/1/01	JAN
10	REVISION	10/1/01	JAN

F-180 G&L F-181&AF