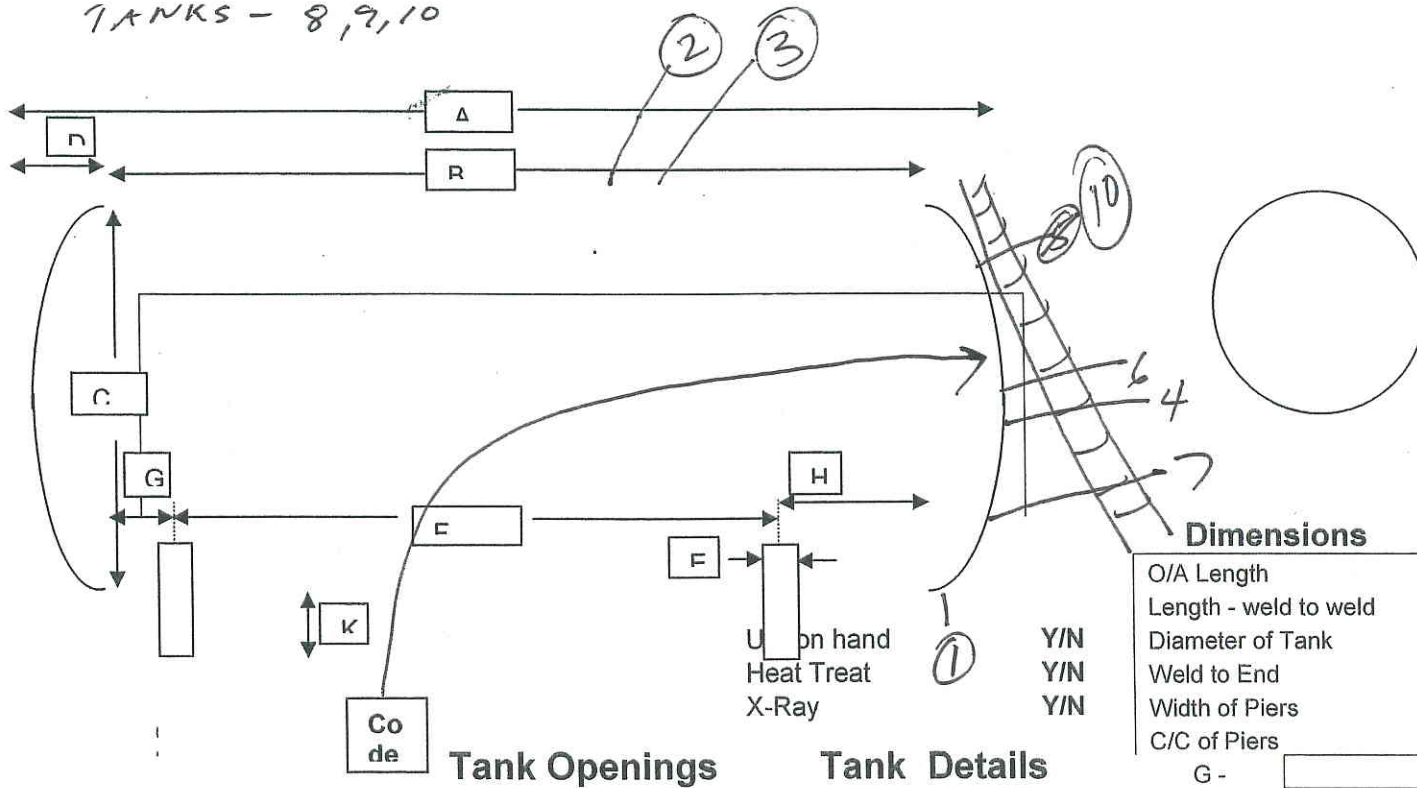


TANKS - 8, 9, 10



Outside Dia	
No of bolts:	
Bolt length:	
Bolt dia.:	
Nom. size:	
Rating:	
Type:	

Dimensions		
O/A Length	A -	51'4"
Length - weld to weld	B -	47
Diameter of Tank	C -	11'
Weld to End	D -	4'5"
Width of Piers	E -	9"
C/C of Piers	F -	34'6"
G -		

U on hand Y/N  
 Heat Treat Y/N  
 X-Ray Y/N

Code

Tank Openings      Tank Details

K - 31"

1			RED FLANGE 2"	Manufacturer:	
2				Date of manufacture	
3					USWG
4				Working Pressure	Tank Weight estimated
5				National Board Number	Tank Shell
6				Serial Number	Tank Head
7				Steel Type:	
8					Pier Type Concrete/saddles / Flat )
9				Jurisdiction #	Tank Saddles welded
10			LADDER	Pressure Gauge	Wear Pads N/A
11				Liquid Level Gauge	
12				Thermometer	
13				Paint Condition:	
14				Color:	
15					Information taken by:
16				Relief Valve Type	Date:
17				Test Date	Tank Location