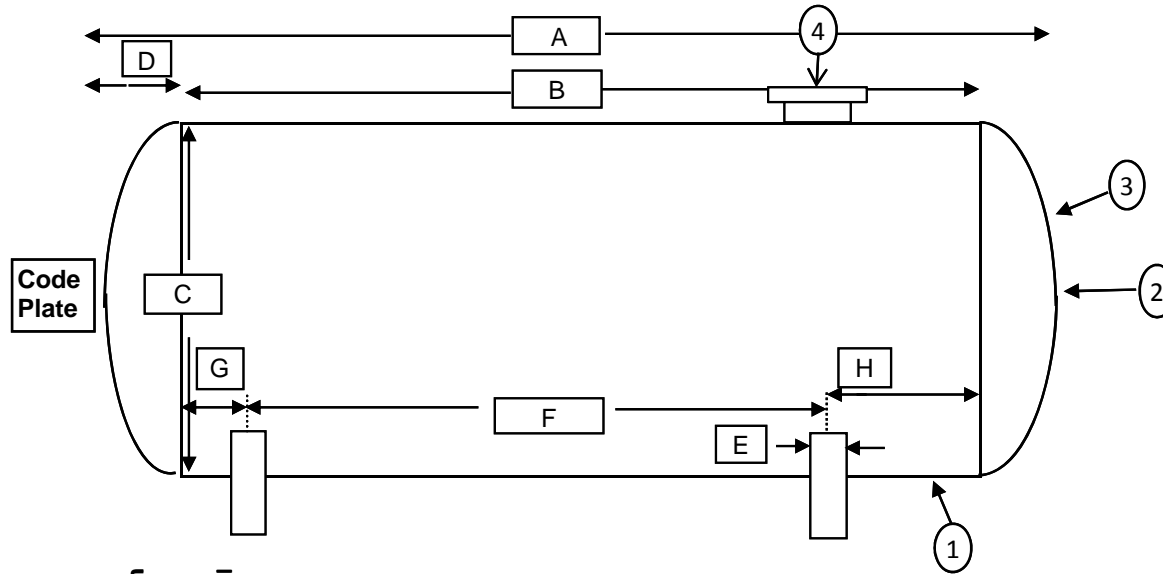
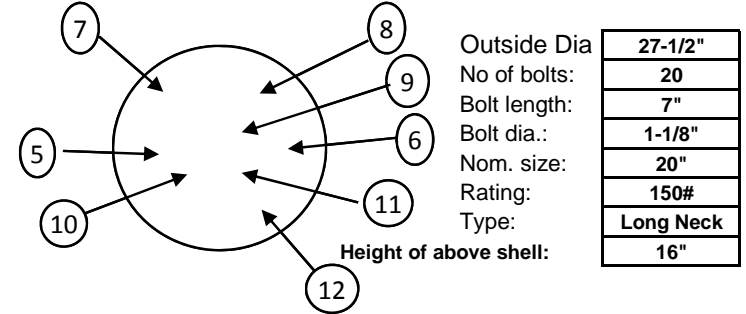


Total Energy Corp

Tank Sketch of field Information



Manway Cover Detail



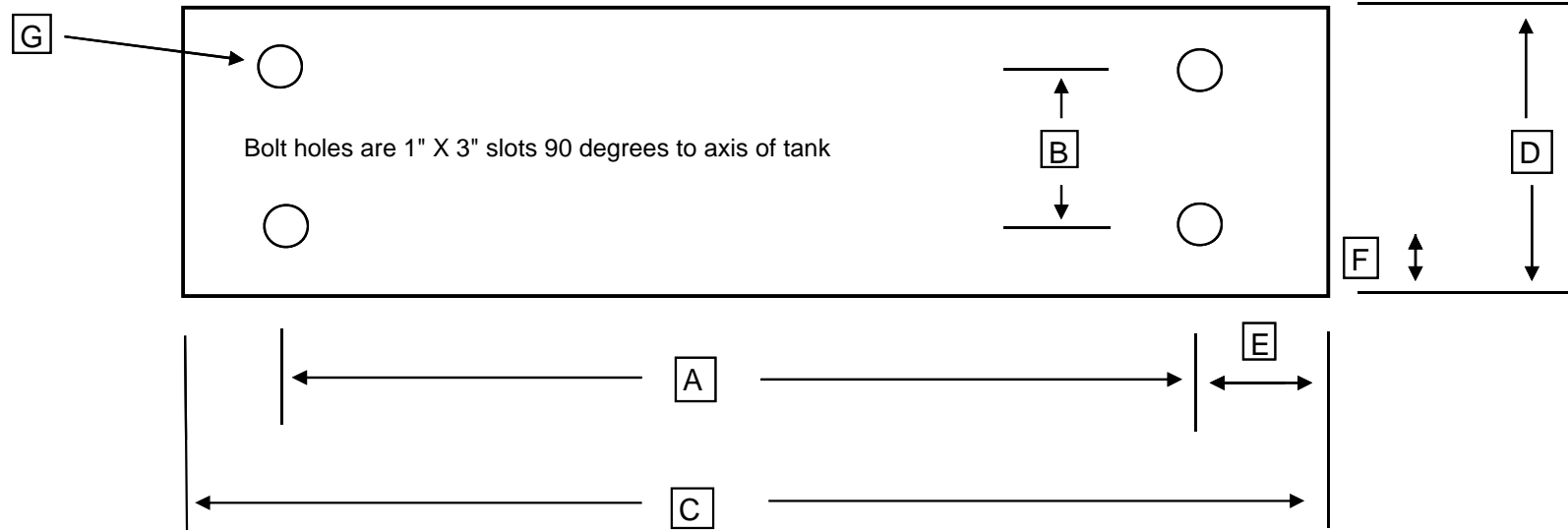
U-1 on hand YES  
Heat Treat NO  
X-Ray NO

Tank Openings

Tank Details

Description	Dimensions
O/A Length	A - 71' 2"
Length - weld to weld	B - 66' 2"
O. D.	C - 8' 8-3/4"
Weld to End	D - 2' 6"
Width of Piers	E - 6"
C/C of Piers	F - 42' 0"
C/L of Piers to Weld end	G - 12' 5-1/2"
	H - 11' 8-1/2"

No	Size	Type	Description	Manufacturer:	American Car & Foundry	Type of Head	Elliptical
1	3"	NPT	2' 0"	Liquid outlet			
2	1"	NPT		Roto-Gauge mount	1947		
3	1/4"	NPT		Pressure gauge mount		Tank Capacity	USWG 29,980
4	20"	150#	4' 6"	9	Manway	Tank Weight	estimated 75,000
5	3"	300#			MultiPort mount	Tank Shell	15/16"
6	3"	300#			Blinded spare	Tank Head	3/4"
7	1-1/2"	NPT				Pier Type	(Concrete / saddles / Flat)
8	1"	NPT				Tank Saddles	Loose steel
9	1"	NPT		Jurisdiction #			
10	1-1/2"	NPT		Pressure Gauge	0-300		
11	1"	NPT		Liquid Level Gauge	Roto-Gauge		
12	1"	NPT					
13				Paint Condition:	Poor		
14				Color:	white		
15						Information taken by:	Gene Botts
16				Relief Valve Type	MultiPort	Date:	4/21/2010
17				Test Date	N/A	Tank Location	Lincoln University, PA



		Number of bolt holes	<b>4</b>
A		Center to center of bolt holes	<b>78"</b>
B		Center to center of bolt holes	<b>4"</b>
C		Outside plate dimension	<b>90"</b>
D		Outside plate dimension	<b>6"</b>
E		Center of hole to edge of plate	<b>6"</b>
F		Center of hole to edge of plate	<b>1"</b>
G		Bolt Hole Diameter	<b>1" X 3" slot</b>
		Bottom of Foot Plate to Shell	<b>4"</b>