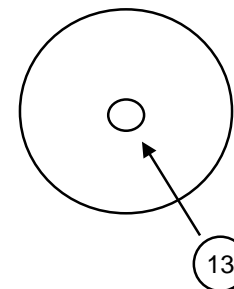


**Manway Cover Detail**



Outside Dia	25"
No of bolts:	16
Bolt length:	5" Studs
Bolt dia.:	1"
Nom. size:	18"
Rating:	
Type:	

Inches from Head Seam

**TANK # 3**

U-1 on hand  
Heat Treat  
X-Ray

YES  
NO  
Complete

**Tank Openings**

**Tank Details**

**Description**

**Dimensions**

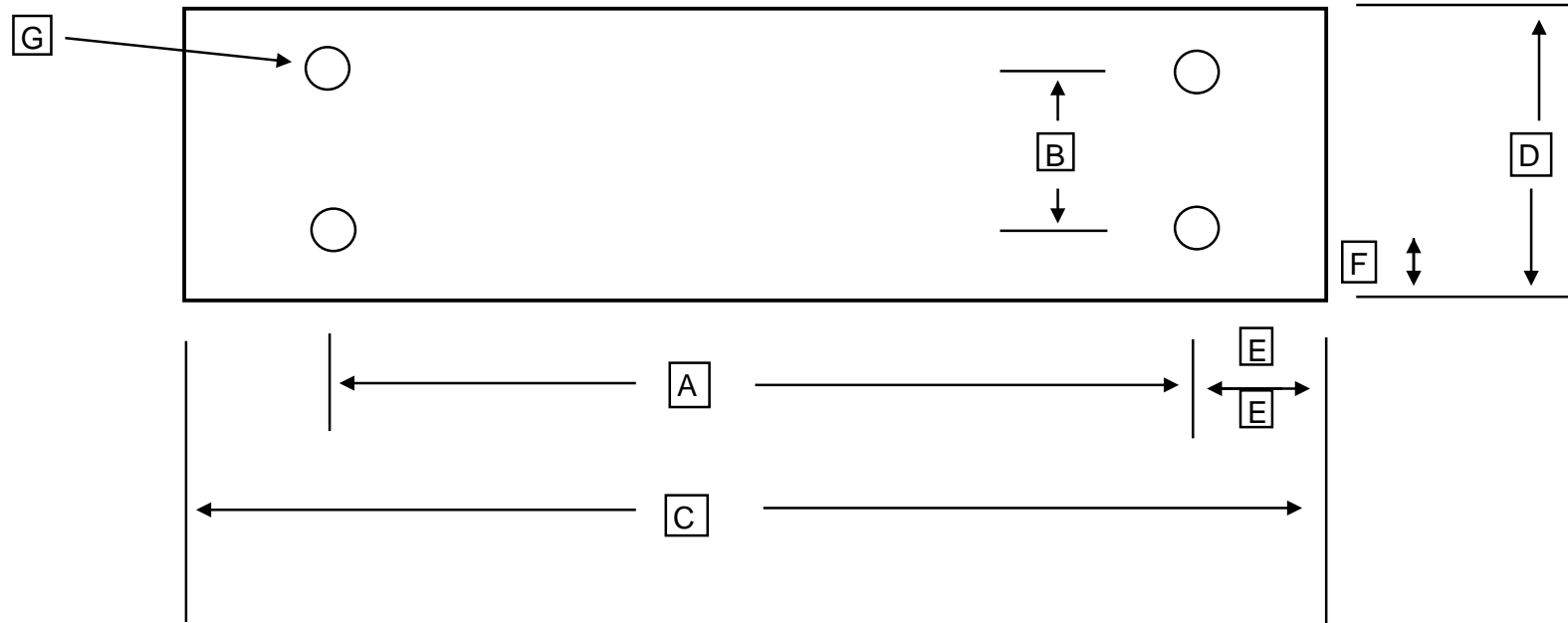
O/A Length	A -	47' 1-5/8"
Length - weld to weld	B -	36'2"
Weld to End	C -	11'
Width of Piers	D -	65"
C/C of Piers	E -	20"
C/L of Piers to Weld end	F -	28'
	G -	48"
	H -	50 1/2"

**No Size Type**

**Description**

1	2"	NPT	12"	Plugged	Manufacturer:	AMF	Type of Head	Hemi	
2	2"	NPT	24"	Plugged	Date of manufacture	1966			
3	2"	NPT	36"	Plugged			Tank Capacity	USWG	30,000
4	2"	NPT	12"	Plugged	Working Pressure	250	Tank Weight	estimated	
5	3"	NPT	200"	Liquid	National Board Number		Tank Shell		0.9375
6	3"	NPT	218"	Liquid	Serial Number	144015	Tank Head		0.528
7	2"	NPT	236"	vapor	Steel Type:	SA212-B			
8	3/4"	NPT	in head	Thermowell			Pier Type (Concrete / saddles / Flat)		
9	3/4"	NPT	in head	Pressure gauge	Jurisdiction #		Tank Saddles		Loose Steel
10	2-1/2"	NPT	in head	vapor	Pressure Gauge				
11	1"	NPT	in head	Roto Gauge	Liquid Level Gauge	Magnatel & Roto			
12	18"	FLG		Manway					
13	3"	FLG	in Manway	Multiport	Paint Condition:	Poor			
14					Color:	White			
15							Information taken by:		Ken Allen
16					Relief Valve Type	Multi Port	Date:		12/9/2009
17					Test Date		Tank Location		Cookeville, TN

Steel Saddle Footprint Sketch



		Number of bolt holes	<b>4</b>
A		Center to center of bolt holes	<b>84"</b>
B		Center to center of bolt holes	<b>6"</b>
C		Outside plate dimension	<b>115-1/2"</b>
D		Outside plate dimension	<b>12"</b>
E		Center of hole to edge of plate	<b>3"</b>
F		Center of hole to edge of plate	<b>16"</b>
G		Bolt Hole Diameter	<b>1-1/4"x3" slot</b>

	Bottom of foot plate to shell	<b>6"</b>
Center to Center	Center between saddles	<b>28'</b>