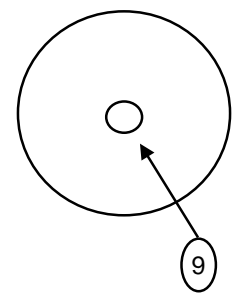


Manway Cover Detail



Outside Dia	25"
No of bolts:	16
Bolt length:	5" Studs
Bolt dia.:	1"
Nom. size:	18"
Rating:	
Type:	

Inches from Head Seam

TANK # 6

U-1 on hand
Heat Treat
X-Ray

YES
YES
Complete

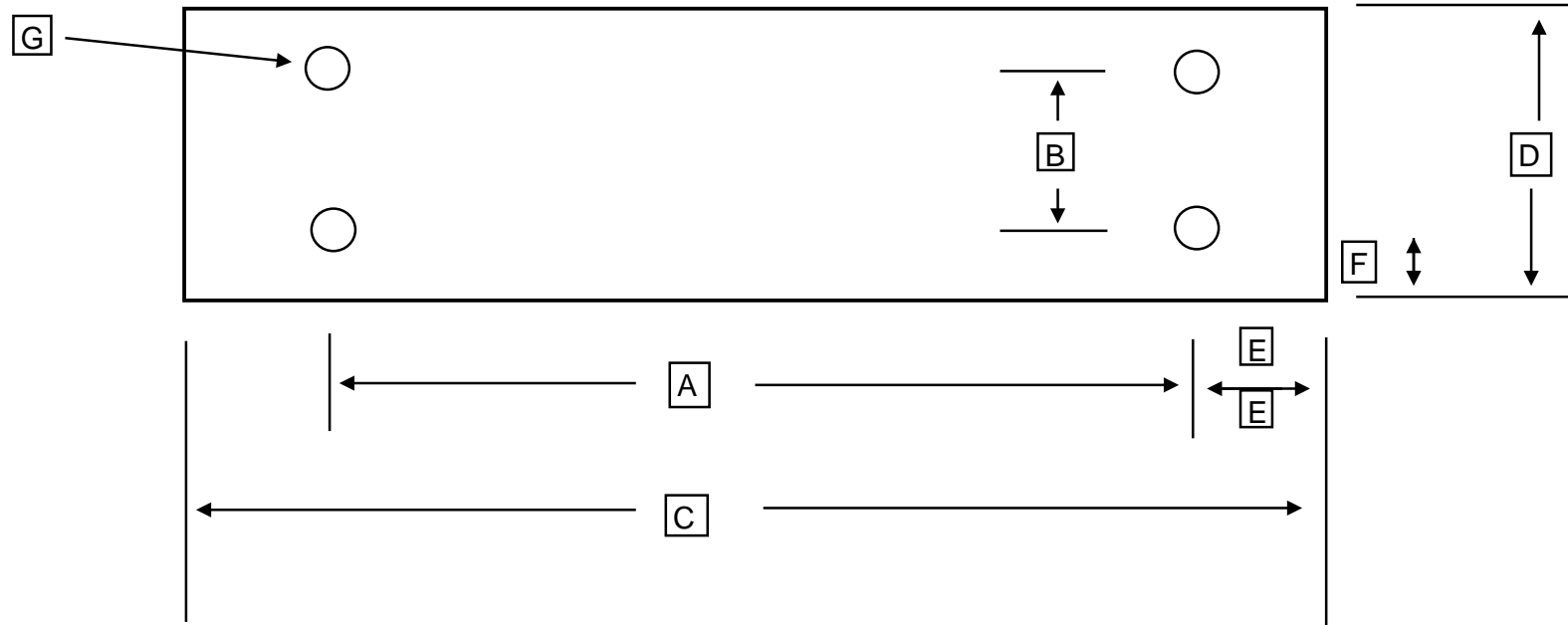
Tank Openings

Tank Details

Description	Dimensions
O/A Length	A - 47' 1-5/8"
Length - weld to weld	B - 36'2"
Weld to End	C - 11'
Width of Piers	D - 65"
C/C of Piers	E - 20"
C/L of Piers to Weld end	F - 28'
	G - 48"
	H - 50 1/2"

No	Size	Type	Description	Tank Details		Description		Dimensions
1	2"	NPT	6"	Liquid	Manufacturer:	AMF Beaird	Type of Head	Hemi
2	2"	NPT	24"	vapor	Date of manufacture	1973		
3	3"	NPT	73"	Liquid	Working Pressure	250	Tank Capacity	USWG 30,000
4	2-1/2"	NPT	in head	Magnatel	National Board Number	92063	Tank Weight	estimated
5	3/4"	NPT	in head	Pressure gauge	Serial Number	199877-01-2	Tank Shell	0.9375
6	3/4"	NPT	in head	Thermowell	Steel Type:	SA515-70	Tank Head	0.528
7	1"	NPT	in head	Roto Gauge				
8	18"	FLG	in Manway	Manway			Pier Type (Concrete / saddles / Flat)	
9	4"	FLG	in Manway	Multiport	Jurisdiction #		Tank Saddles	WELDED STEEL
10					Pressure Gauge			
11					Liquid Level Gauge	Magnatel & Roto		
12								
13					Paint Condition:	Poor		
14					Color:	White		
15							Information taken by:	Ken Allen
16					Relief Valve Type	Multi Port	Date:	12/9/2009
17					Test Date		Tank Location	Cookeville, TN

Steel Saddle Footprint Sketch



		Number of bolt holes	4
A		Center to center of bolt holes	84"
B		Center to center of bolt holes	6"
C		Outside plate dimension	116"
D		Outside plate dimension	12"
E		Center of hole to edge of plate	3"
F		Center of hole to edge of plate	16"
G		Bolt Hole Diameter	1-1/4" x 3"

	Bottom of foot plate to shell	6"
Center to Center	Center between saddles	28'