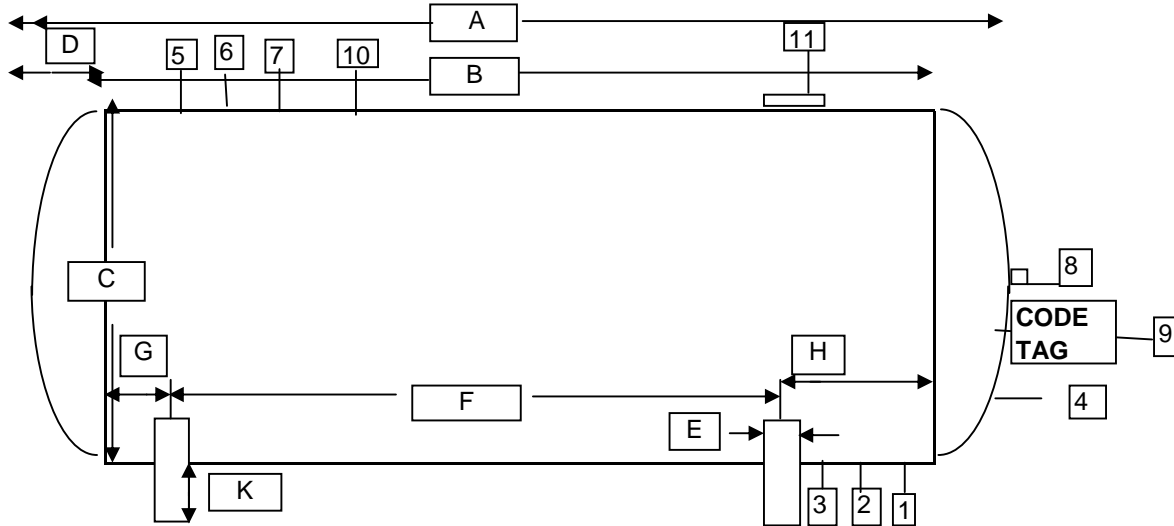


# Total Energy Corp

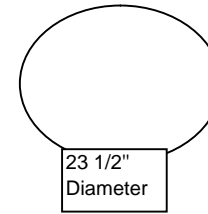
## Tank Sketch of field Information



No U-1 on hand

Manhole is 4" above the tank.  
Manhole is 3' from head seamm

### Manway Cover Detail



No of bolts:	16
Bolt length:	studs
Bolt diamet:	1"
C/C of studs:	4 1/8"
Circle:	21 1/8"
Nom size:	16"
Rating:	150#

Note:

- Forward copies of any certificates, affidavits and drawings if available
- Show size and location of all openings
- Show all horizontal and vertical welds on shell, locate and show manway on tank
- Locate size and identify all openings in manway cover detail
- Show length, with, height and bolt centers of steel saddles where used

Description		Dimensions	
O/A Length	A -	47'	
Length - weld to weld	B -	36'	
Diameter of Tank	O. D.	C -	131.875
Weld to End	D -	5' 6"	
Width of Piers	E -	14"	
C/C of Piers	F -	25'	
C/L of Piers to Weld end	G -	70"	
	H -	62"	
	K -		

### Tank Openings

### Tank Details

No	Size	Type		Description	
1	3"	Thr.	Liq	Centered 6" from head seam	Manufacture:
2	3"	Thr.	Liq	Centered 24" from head seam	Date of man.
3	2"	Thr.	vapor	Centered 42" from head seam	Retest Date:
4	3/4"	Thr.		thermometer	Working Pressure
5	2"	Thr.	Vapor	Centered 12" from head seam	NB #
6	2"	Thr.	vapor	Centered 24" from head seam	Serial #
7	2"	Thr.	vapor	Centered 36" from head seam	Steel Type:
8	2 1/2"	Thr.		Magnetic gauge	ASME # :
9	1/4"	Thr.		pressure gauge and 85%	Provincial #
10	2"	Thr.	vapor	Centered 48" from head seam	Fixed Liquid Level gauge
11					Float Gauge:
12					Thermometer
13					Paint Condition:
14					Color:
15					<b>Relief Valves</b>
16					Multi Port or Screwed
17					Test Date

Riley Beaird	Type of Head	Hemi
6/19/1973		
	Tank Capacity	USWG 29,835
250 @ 100	Tank Weight	
7666	Tank Shell	0.8125
103388-01-13	Tank Head	,46875
SA 612	surface area	1616 sq. ft.
	Pier Type (Concrete / saddles / Saddles)	
	Tank Saddles	concrete
	History before the last moved	
	Drawn by:	
White fair	Drawn #	
	Information taken by:	
screwed	Date:	
	<b>Tank Location</b>	Clemson, SC.