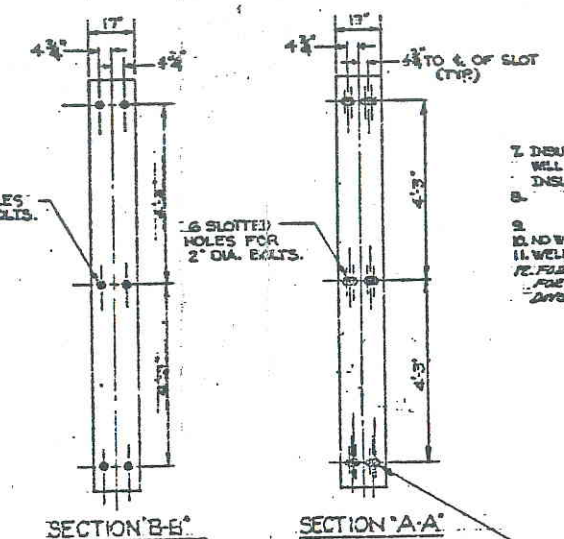
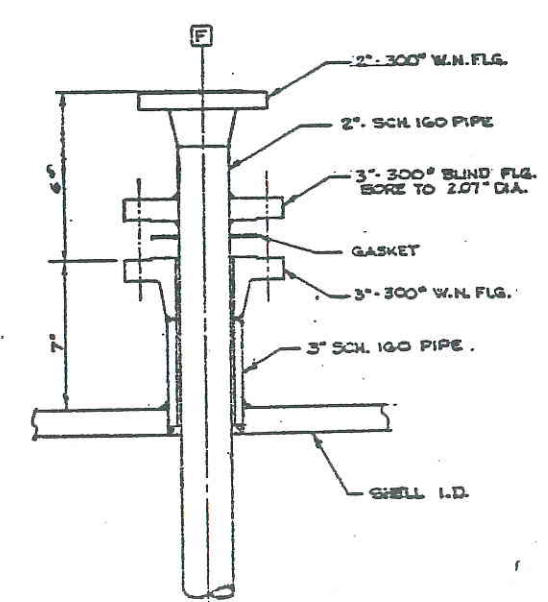


ELEVATION



GENERAL NOTES (CONT.)

- 1. INSULATION ON VESSEL MUST BE COVERED WITH A MATERIAL THAT WILL PERMIT FIRE HOSE TO BE USED WITHOUT KNOWING OFF INSULATION.
- 2. ISLAND WELDING TO VESSEL AFTER POST WELD HEAT TREATING.
- 3. WELD NECK FLANGES OR LONG WELD NECKS ONLY.
- 4. PER. FAB. LADDER PLATFORM CLIPS & SUPPORT SADDLES FOR DIFFERENTIAL CONDENSER TTK-533 SEE DWG. E1661-477A.



GO COMPLETE WITH 300" BLIND FLANGE, GASKET, BOLTING, AND DAVIT.

CONNECTION	QTY	SIZE	TYPE	LOCATION	PER STD. ASB-H	REMARKS
V	1	2"	300"	VENT	9"	
T	1	1 1/2"		TEMP. RESIST. BULL.	4"	
T	1	1 1/2"		THERMOCOUPLE	9"	
P	1	1"		PRESS. GAGE	9"	
M	2	20"		MANHOLE	12"	SEE NOTE (C)
L	1	1 1/2"		LEVEL INDICATOR	9"	
F	2	1 1/2"		FLOAT GUIDES	9"	
F	1	2"		LIQUID FROM COND.	9"	SEE DET. 'X'
E	1	2"		SAFETY VALVE	9"	
D	2	2"		LIQUID OUT	10"	
C	1	2"		VAPOR TO COND.	9"	
V	1	2"		VAPOR INLET	9"	
A	1	2"		INLET LIQUID	9"	
CONNECTION	QTY	SIZE	TYPE	LOCATION	PER STD. ASB-H	REMARKS

LIST OF CONNECTIONS

MATERIAL NOTES

▲ SHELL	ASTM-A212 GR. B FIBEREX QUALITY
▲ WELDS	ASTM-A212 GR. B FIBEREX QUALITY
▲ SUPPORTS	ASTM-A212 GR. B FIBEREX QUALITY
▲ FITTINGS	ASTM-A212 GR. B FIBEREX QUALITY
▲ NOZZLES	ASTM-A212 GR. B FIBEREX QUALITY
▲ MANHOLE	ASTM-A212 GR. B FIBEREX QUALITY
▲ SAFETY VALVE	ASTM-A212 GR. B FIBEREX QUALITY
▲ PRESS. GAGE	ASTM-A212 GR. B FIBEREX QUALITY
▲ THERMOCOUPLE	ASTM-A212 GR. B FIBEREX QUALITY
▲ LEVEL INDICATOR	ASTM-A212 GR. B FIBEREX QUALITY
▲ LIQUID FROM COND.	ASTM-A212 GR. B FIBEREX QUALITY
▲ VAPOR TO COND.	ASTM-A212 GR. B FIBEREX QUALITY
▲ VAPOR INLET	ASTM-A212 GR. B FIBEREX QUALITY
▲ INLET LIQUID	ASTM-A212 GR. B FIBEREX QUALITY

GENERAL NOTES

OPERATING PRESS.	80 PS.I.G.	OPERATING TEMP.	-45°F
DESIGN PRESS.	250 PS.I.G.	DESIGN TEMP.	-50°F TO 250°F
CORROSION ALLOWANCE	0.000"		
JOINT EFFICIENCY	100%		
STRESS RELIEVING	YES		
RADIOGRAPHY	SEE NOTE #5 BELOW (FULL RADIOGRAPHY)		
MAXIMUM ALLOW. WORKING PRESS. (NEW & COLD)	250 PS.I.G.		
LIMITED BY	ASME		
ALLOW. STRESS AT DESIGN TEMP.	17,500		
FACTOR OF SAFETY	4		
HYDROSTATIC TEST PRESS.	412 PS.I.		
CONSTRUCTION	PER ASME CODE SECTION VIII LATEST EDITION		
PER. U.S. (U)	AND REQUIREMENTS OF THE PROVINCE OF QUEBEC		
CODE STAMPING	ASME AND PROVINCE OF QUEBEC		
INSPECTION BY	QUALIFIED INSPECTOR		
FINISH	NONE		
INSULATION	5" TRANSULAT - JACKET (BY OTHERS)		
SHIPPING WT.	192,800#		
OPERATING WT.	845,200# (FULL HCL 55% (98))		
TOTAL LOAD ON FOUNDATION	720,000# (FULL H2O)		
SUPPLEMENTARY INSPECTION BY THE BADGER CO. APPROX. FOR CLIENT			

REFERENCE DRAWINGS

TYPICAL CONSTRUCTION DETAILS	C - STD. A-4 (E)
CONSTRUCTION TOLERANCES	C - STD. A-9 (E)
MANHOLE HINGE AND DAVIT DETAILS	C - STD. A-6 (E)
150" AND 300" ASME NOZZLES	C - STD. AGS-H (C)
SADDLE DETAILS	C - STD. M44-H (C)
BADGER PRESSURE VESSEL SPEC.	SP-1501 - M100
	E1661-477A

REV.	DATE	BY	DESCRIPTION OF CHG.	CHKD.	APP.
VI	1/15/70	J.P.	ADDED 2" DIA. BOLT HOLES TO STRADDLE		
V	1/15/70	J.P.	ADDED 2" DIA. BOLT HOLES TO STRADDLE		
IV	1/15/70	J.P.	ADDED 2" DIA. BOLT HOLES TO STRADDLE		
III	1/15/70	J.P.	ADDED 2" DIA. BOLT HOLES TO STRADDLE		
II	1/15/70	J.P.	ADDED 2" DIA. BOLT HOLES TO STRADDLE		
I	1/15/70	J.P.	ADDED 2" DIA. BOLT HOLES TO STRADDLE		

H'CL STORAGE TANK MS-(F)-529  
VINYL CHLORIDE UNIT  
SHAWINIGAN CHEMICALS LIMITED  
VARENNES QUEBEC

CANADIAN BADGER COMPANY LIMITED  
TORONTO, ONTARIO

SCALE: 3/16" = 1'-0"

DATE: 1/15/70

DWG. NO. E1661-339A

The recipient of this print agrees not to copy, reproduce or otherwise use it without the consent of the owner, CANADIAN BADGER COMPANY LIMITED and to return it upon request.