

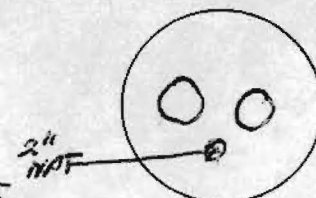
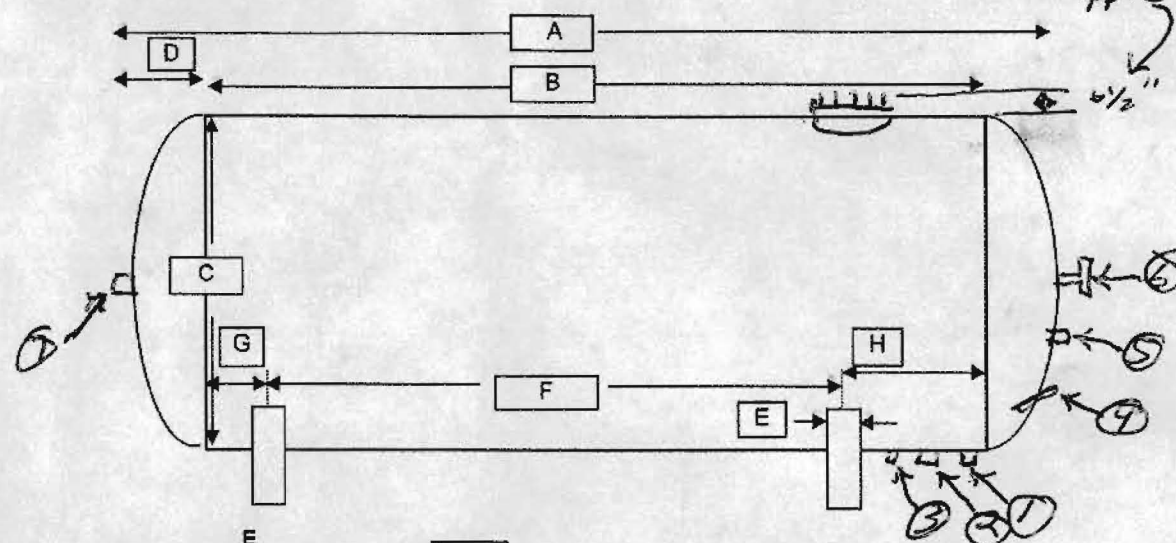
Total Energy Corp

Tank Sketch of field Information

Reference only - NOT FOR CONSTRUCTION

If you remove the manifolds + 2" nipple

Manway Cover Detail



Outside Dia	28"
No of bolts:	24
Bolt length:	7"
Bolt dia.:	1 1/4"
Nom. size:	16"
Rating:	
Type:	
Height of above shell:	4 1/2"

2 Rego Manifolds
4" Dia ANSI
8 Bolts
7/8" holes
4-3" Valves NPT

Inches from Head Seam

Code Plate

U-1 on hand Y
Heat Treat N
X-Ray Y

Tank Openings

Tank Details

Description

Dimensions

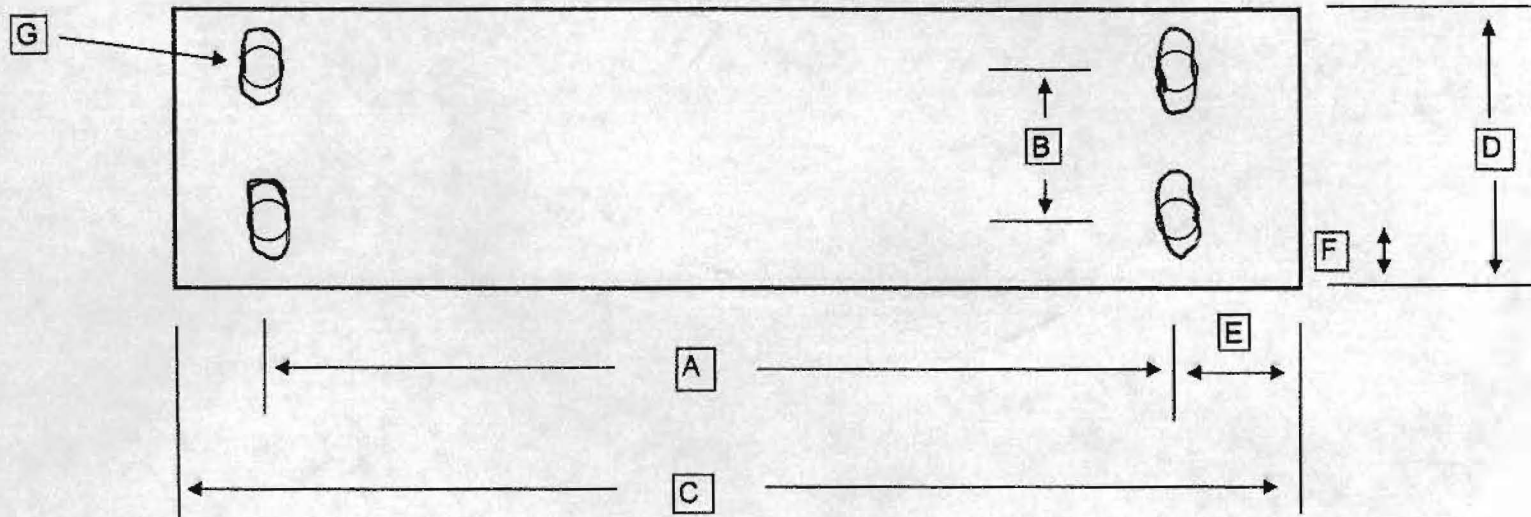
O/A Length	A-	79' 3 1/2"
Length - weld to weld	B-	79' 3 1/2"
Weld to End	C-	10' 10 1/2"
Width of Piers	D-	5' 5 1/2"
C/C of Piers	E-	4' 5 1/2"
C/L of Piers to Weld end	F-	60' 3"
	G-	5' 8 1/2"
	H-	5' 8 1/2"

No	Size	Type	Description	Manufacturer:	Date of manufacture	Type of Head
1	3"	ANSI	Outlet	Riley Valve Inc	1973	
2	3"	ANSI	Inlet			
3	3"	ANSI	Vapor			Tank Capacity 59.775 USWG
4	3/4"	NPT	Thermocouple		Working Pressure 250 PSI	Tank Weight estimated
5	3/4"	NPT	Pressure		National Board Number 8234	Tank Shell
6		ANSI	Volume		Serial Number 102505-01-1	Tank Head
7	1"	NPT	Plugged		Steel Type: SA-612-A	Pier Type (Concrete / saddles / Flat)
8						Tank Saddles Steel
9					Jurisdiction #	
10					Pressure Gauge	
11					Liquid Level Gauge	
12						
13					Paint Condition: Good	
14					Color: White	
15						Information taken by: QS
16					Relief Valve Type: Multi Port	Date: 5-5-09
17					Test Date: 5 year rotation	Tank Location: DM Ia # 31

Steel Saddle Footprint Sketch

60,000 gal

Steel Saddle Footprint Sketch



		Number of bolt holes	4
A	7' 10 1/2"	Center to center of bolt holes	
B	6"	Center to center of bolt holes	
C	9' 2 1/2"	Outside plate dimension	
D	12"	Outside plate dimension	
E	16"	Center of hole to edge of plate	
F	3"	Center of hole to edge of plate	
G	1 1/4"	Bolt Hole Diameter	
	0 3/8"	Bottom of Foot Plate to Shell	6"