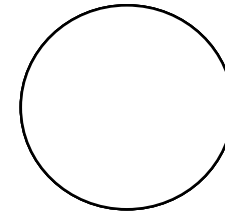


**Manway Cover Detail**



Outside Dia	
No of bolts:	
Bolt length:	
Bolt dia.:	
Nom. size:	
Rating:	
Type:	

skid dimensions are 34'6" x 7'6"  
cover is aluminum on sides and fiberglass on the tail end

Inches from Head Seam

Code Plate

U-1 on hand Y/N  
Heat Treat Y/N  
X-Ray Y/N

**Tank Openings**

**Tank Details**

**Description**

**Dimensions**

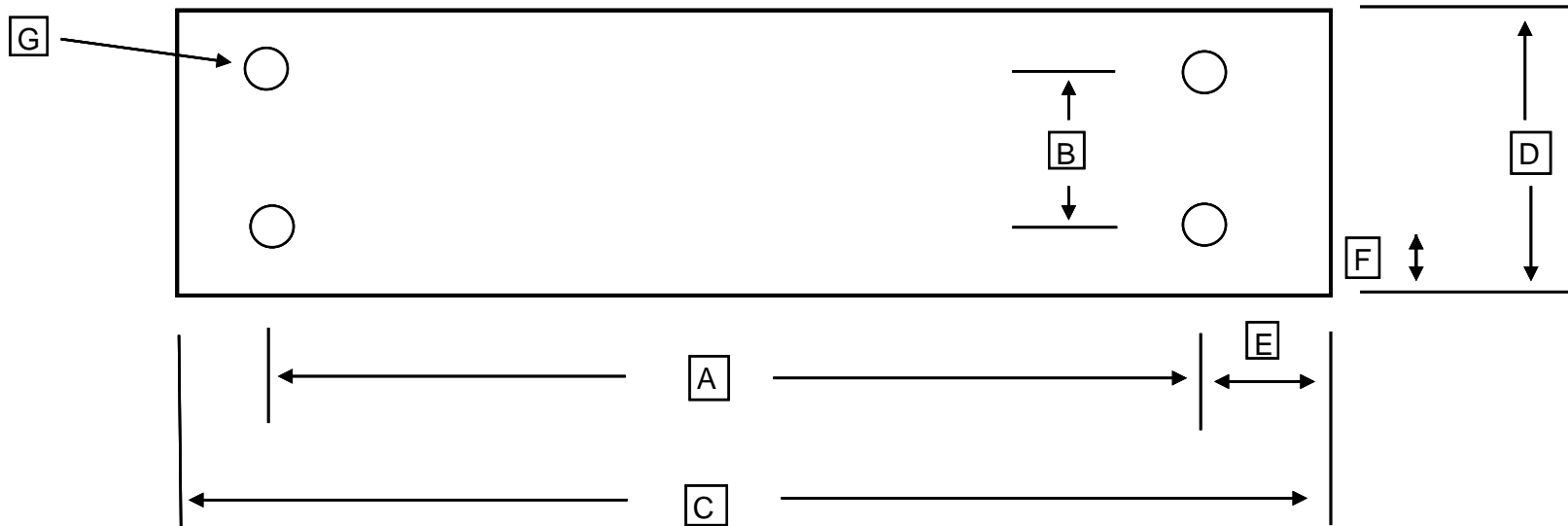
O/A Length	A -	34'6"
Length - weld to weld	B -	
Circumferanc	C -	22'6"
Weld to End	D -	
Width of Piers	E -	
C/C of Piers	F -	22'
C/L of Piers to end of cabinet	G -	6'10"
	H -	

No Size Type

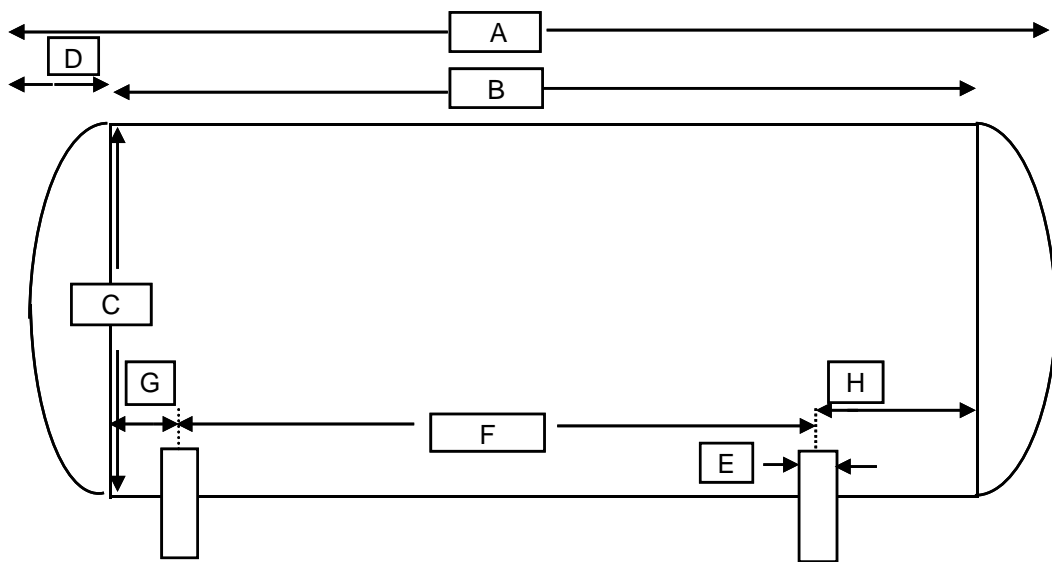
Description

1	1"	v		Manufacturer:	Tomco Equip Co	Type of Head	Hemi
2	1"			Date of manufacture	1982		
3	3/4"					Tank Capacity	USWG 30 tons
4	1"			Working Pressure	350 psi @ 200	Tank Weight	estimated
5	2"		back end	National Board Number	774	Tank Shell	
6			12" x 16" opening in backend	Serial Number	774	Tank Head	
7				Steel Type:	sa 612		
8						Pier Type (saddles / Flat)	
9				Jurisdiction #		Tank Saddles	Steel
10				Pressure Gauge			
11				Liquid Level Gauge			
12							
13				Paint Condition:			
14				Color:	silver aluminum cover		
15						Information taken by:	Buddy Souto
16				Relief Valve Type	1 1/4"	Date:	12/29/2009
17				Test Date		Tank Location	chattanooga Tn

Steel Saddle Footprint Sketch



		Number of bolt holes	
A	8' 9"	Center to center of bolt holes	n/a
B	N/A	Center to center of bolt holes	n/a
C	7'6"	Outside plate dimension	n/a
D	15"	Outside plate dimension	n/a
E		Center of hole to edge of plate	n/a
F		Center of hole to edge of plate	n/a
G		Bolt Hole Diameter	n/a
		Bottom of Foot Plate to Shell	n/a



Inches from Head Seam

Code Plate

U-1 on hand                    Y/N  
 Heat Treat                    Y/N  
 X-Ray                            Y/N

**Tank Openings**

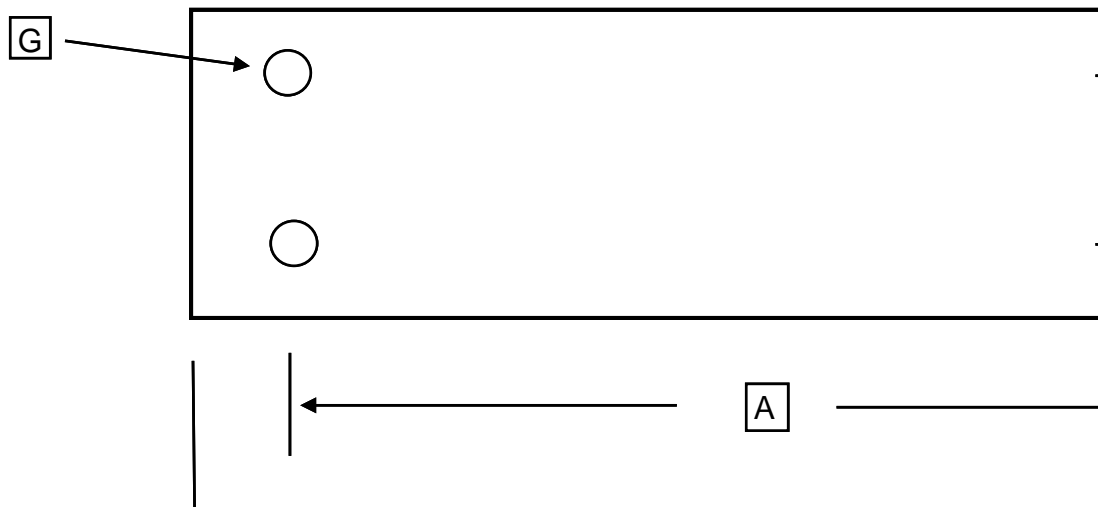
**Tank Detail**

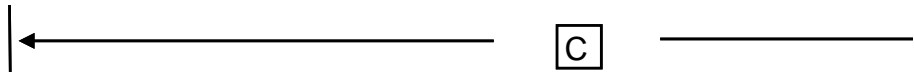
No Size Type

Description

1	3"				Manufacturer:	
2					Date of manufacture	
3						
4					Working Pressure	
5					National Board Number	
6					Serial Number	
7					Steel Type:	
8						
9					Jurisdiction #	
10					Pressure Gauge	
11					Liquid Level Gauge	
12						
13					Paint Condition:	
14					Color:	
15						
16					Relief Valve Type	
17					Test Date	

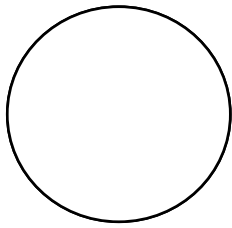
Steel Saddle Footprint Sketch





		Number of bolt holes	
A		Center to center of bolt holes	
B		Center to center of bolt holes	
C		Outside plate dimension	
D		Outside plate dimension	
E		Center of hole to edge of plate	
F		Center of hole to edge of plate	
G		Bolt Hole Diameter	
		Bottom of Foot Plate to Shell	

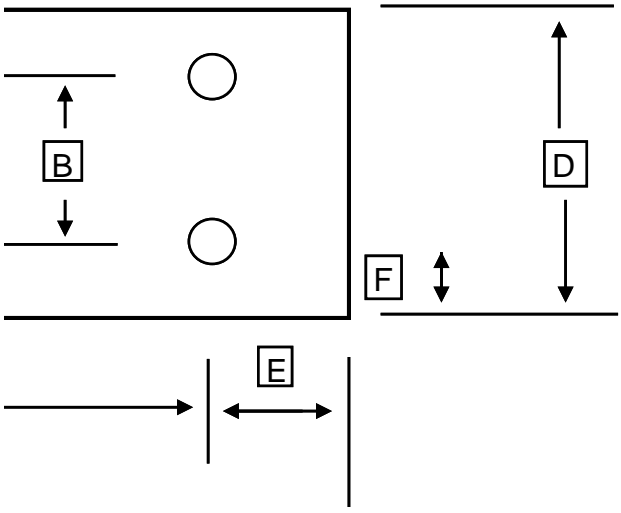
# Manway Cover Detail

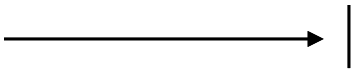


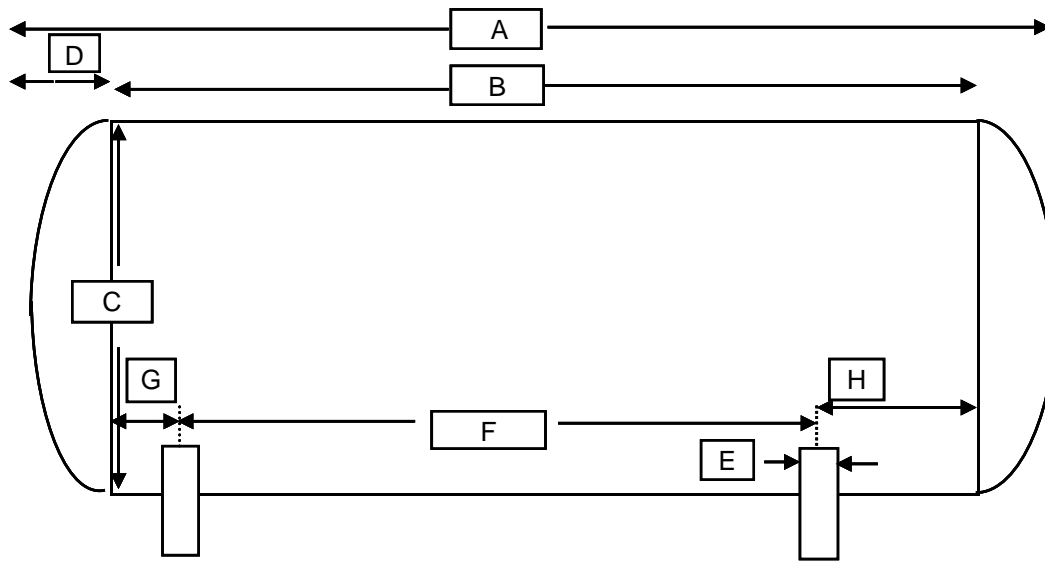
Outside Dia	
No of bolts:	
Bolt length:	
Bolt dia.:	
Nom. size:	
Rating:	
Type:	

S

Description	Dimensions
O/A Length	A -
Length - weld to weld	B -
O. D.	C -
Weld to End	D -
Width of Piers	E -
C/C of Piers	F -
C/L of Piers to Weld end	G -
	H -
Type of Head	
Tank Capacity	USWG
Tank Weight	estimated
Tank Shell	
Tank Head	
Pier Type (Concrete / saddles / Flat ) <span style="float: right;"><b>Concrete</b></span>	
Tank Saddles <b>N/A</b>	
Information taken by:	<b>Buddy Souto</b>
Date:	
Tank Location	↔ ↔







Inches from Head Seam

Code Plate

U-1 on hand Y/N  
 Heat Treat Y/N  
 X-Ray Y/N

**Tank Openings**

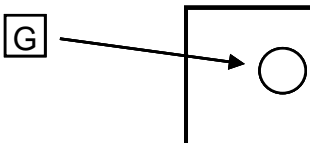
**Tank Detail**

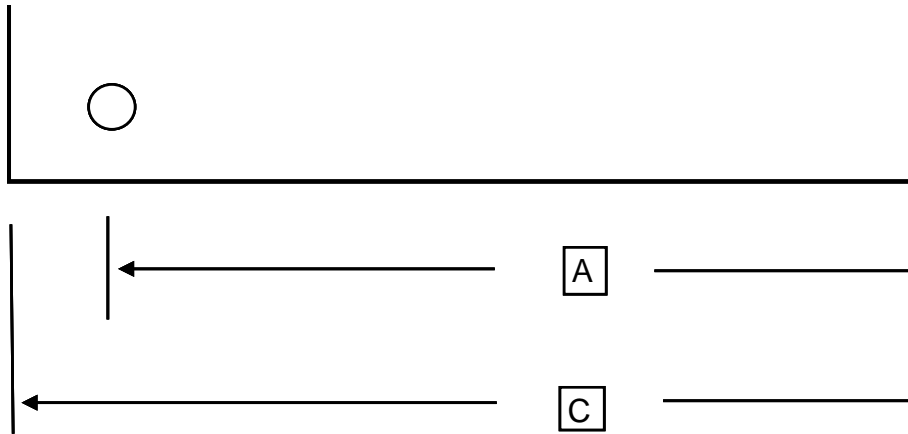
No Size Type

Description

1	3"			Manufacturer:	
2				Date of manufacture	
3					
4				Working Pressure	
5				National Board Number	
6				Serial Number	
7				Steel Type:	
8					
9				Jurisdiction #	
10				Pressure Gauge	
11				Liquid Level Gauge	
12					
13				Paint Condition:	
14				Color:	
15					
16				Relief Valve Type	
17				Test Date	

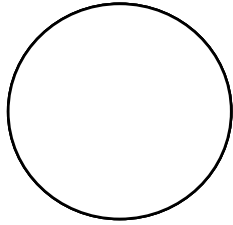
**Steel Saddle Footprint Sketch**





		Number of bolt holes	
A		Center to center of bolt holes	
B		Center to center of bolt holes	
C		Outside plate dimension	
D		Outside plate dimension	
E		Center of hole to edge of plate	
F		Center of hole to edge of plate	
G		Bolt Hole Diameter	
		Bottom of Foot Plate to Shell	

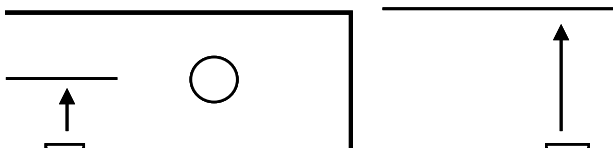
# Manway Cover Detail

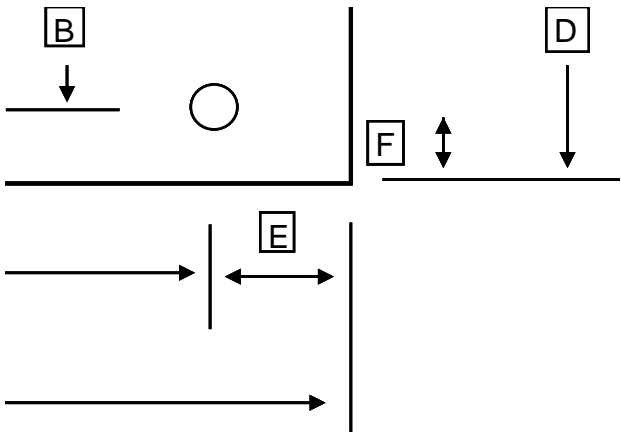


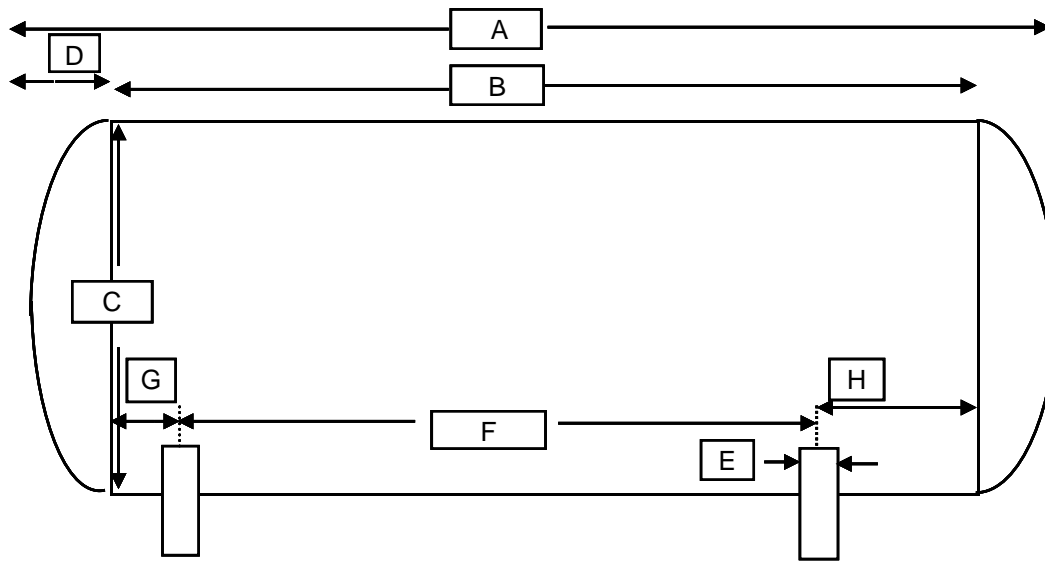
Outside Dia	
No of bolts:	
Bolt length:	
Bolt dia.:	
Nom. size:	
Rating:	
Type:	

S

Description	Dimensions
O/A Length	A -
Length - weld to weld	B -
O. D.	C -
Weld to End	D -
Width of Piers	E -
C/C of Piers	F -
C/L of Piers to Weld end	G -
	H -
Type of Head	
Tank Capacity	USWG
Tank Weight	estimated
Tank Shell	
Tank Head	
Pier Type (Concrete / saddles / Flat ) <span style="float: right;"><b>Concrete</b></span>	
Tank Saddles <b>N/A</b>	
Information taken by:	<b>Buddy Souto</b>
Date:	
Tank Location	↔ ↔







Inches from Head Seam

Code Plate

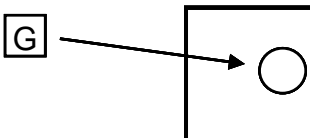
U-1 on hand Y/N  
 Heat Treat Y/N  
 X-Ray Y/N

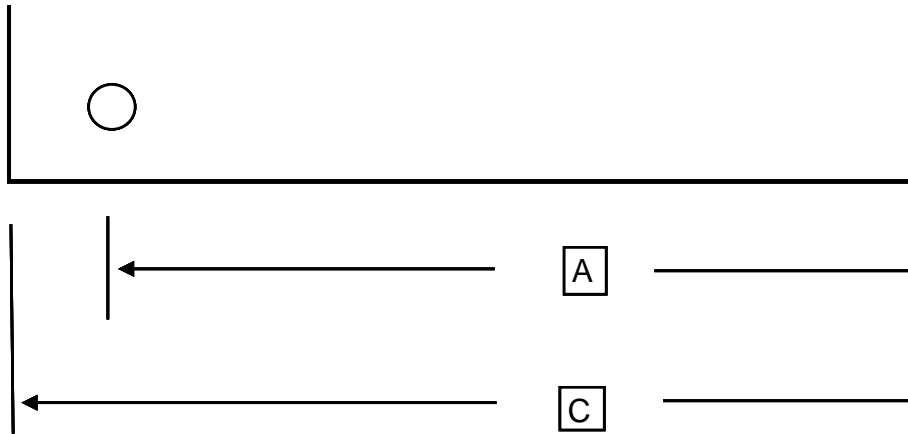
**Tank Openings**

**Tank Detail**

No	Size	Type	Description	
1	3"			Manufacturer:
2				Date of manufacture
3				
4				Working Pressure
5				National Board Number
6				Serial Number
7				Steel Type:
8				
9				Jurisdiction #
10				Pressure Gauge
11				Liquid Level Gauge
12				
13				Paint Condition:
14				Color:
15				
16				Relief Valve Type
17				Test Date

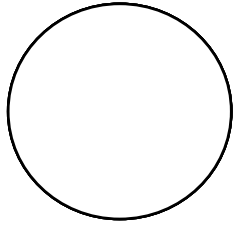
**Steel Saddle Footprint Sketch**





		Number of bolt holes	
A		Center to center of bolt holes	
B		Center to center of bolt holes	
C		Outside plate dimension	
D		Outside plate dimension	
E		Center of hole to edge of plate	
F		Center of hole to edge of plate	
G		Bolt Hole Diameter	
		Bottom of Foot Plate to Shell	

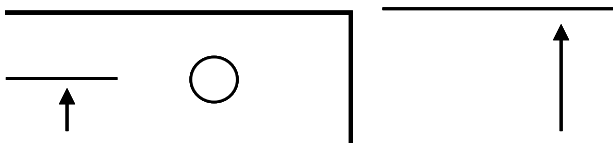
# Manway Cover Detail

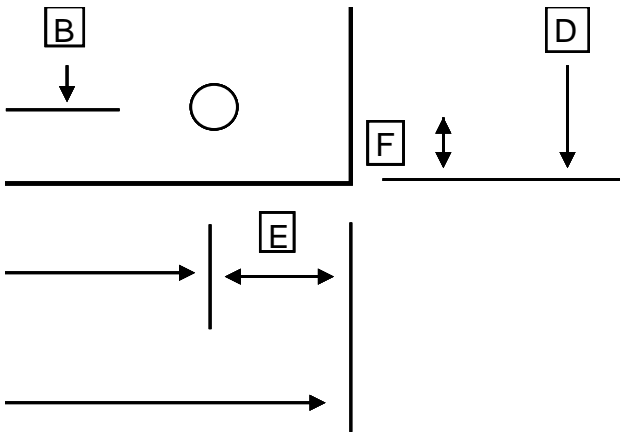


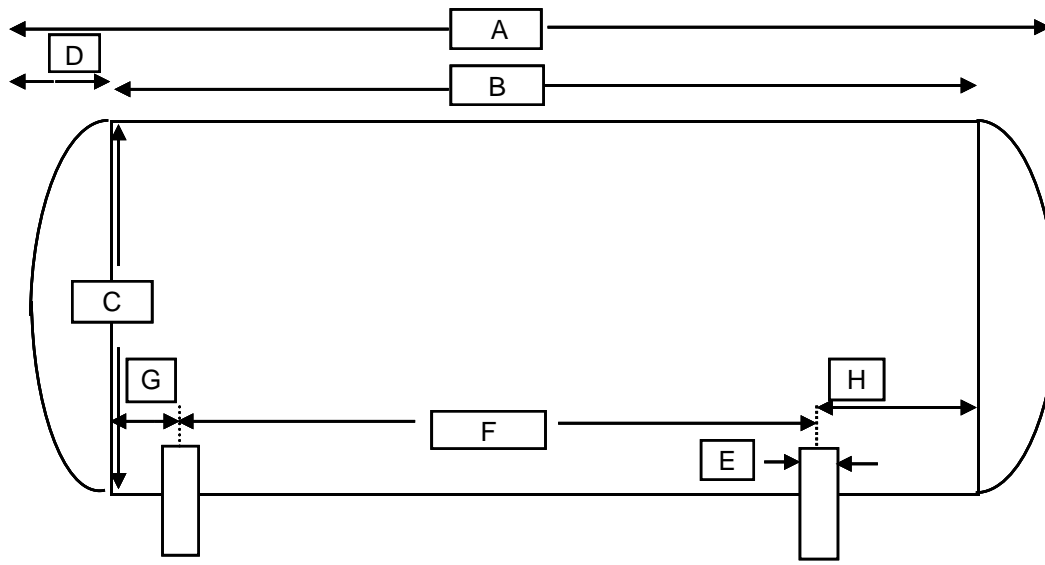
Outside Dia	
No of bolts:	
Bolt length:	
Bolt dia.:	
Nom. size:	
Rating:	
Type:	

S

Description	Dimensions
O/A Length	A -
Length - weld to weld	B -
O. D.	C -
Weld to End	D -
Width of Piers	E -
C/C of Piers	F -
C/L of Piers to Weld end	G -
	H -
Type of Head	
Tank Capacity	USWG
Tank Weight	estimated
Tank Shell	
Tank Head	
Pier Type (Concrete / saddles / Flat ) <span style="float: right;"><b>Concrete</b></span>	
Tank Saddles <b>N/A</b>	
Information taken by:	<b>Buddy Souto</b>
Date:	
Tank Location	↔ ↔







Inches from Head Seam

Code Plate

U-1 on hand      Y/N  
 Heat Treat        Y/N  
 X-Ray                Y/N

**Tank Openings**

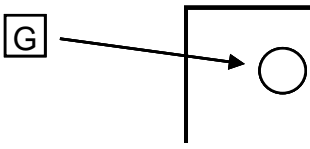
**Tank Detail**

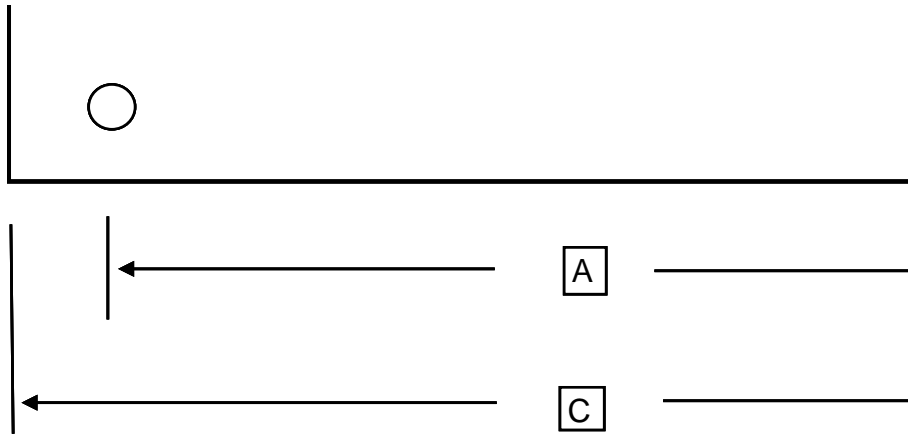
No Size Type

Description

1	3"			Manufacturer:	
2				Date of manufacture	
3					
4				Working Pressure	
5				National Board Number	
6				Serial Number	
7				Steel Type:	
8					
9				Jurisdiction #	
10				Pressure Gauge	
11				Liquid Level Gauge	
12					
13				Paint Condition:	
14				Color:	
15					
16				Relief Valve Type	
17				Test Date	

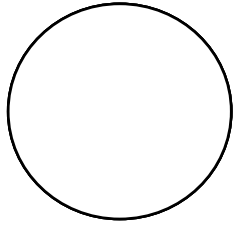
**Steel Saddle Footprint Sketch**





		Number of bolt holes	
A		Center to center of bolt holes	
B		Center to center of bolt holes	
C		Outside plate dimension	
D		Outside plate dimension	
E		Center of hole to edge of plate	
F		Center of hole to edge of plate	
G		Bolt Hole Diameter	
		Bottom of Foot Plate to Shell	

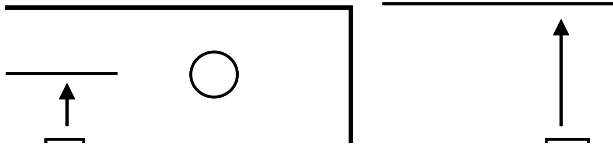
# Manway Cover Detail

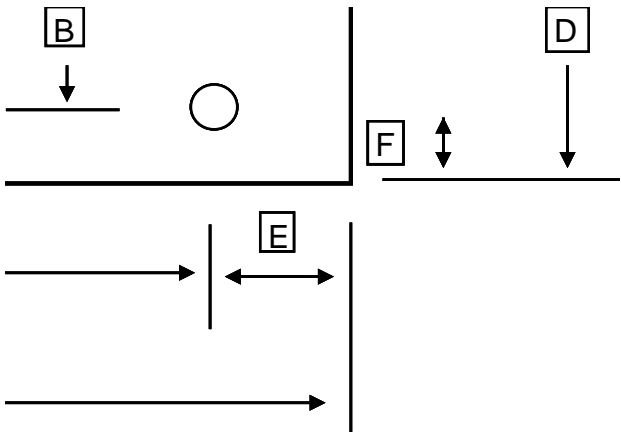


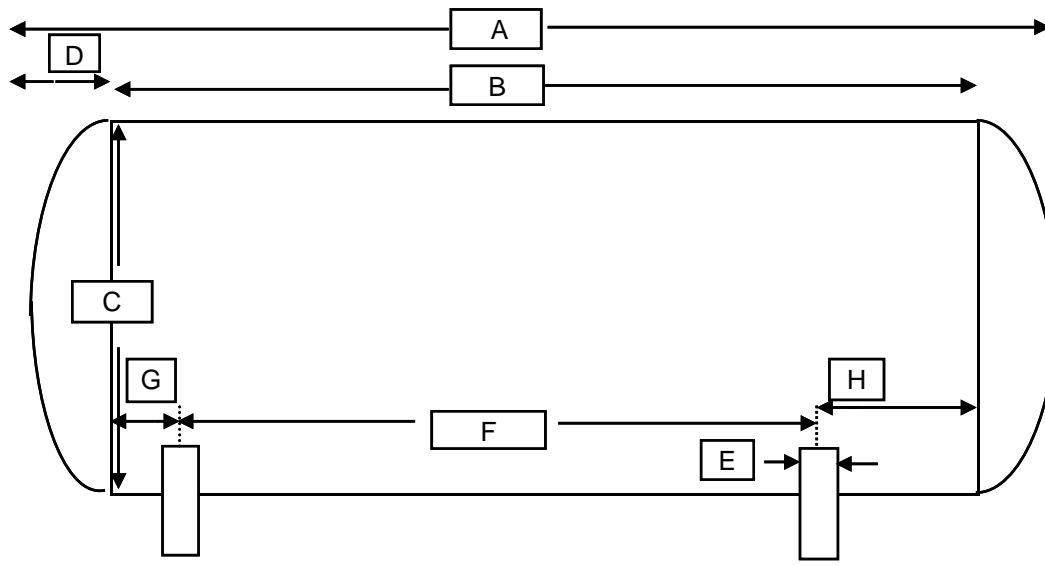
Outside Dia	
No of bolts:	
Bolt length:	
Bolt dia.:	
Nom. size:	
Rating:	
Type:	

S

Description	Dimensions
O/A Length	A -
Length - weld to weld	B -
O. D.	C -
Weld to End	D -
Width of Piers	E -
C/C of Piers	F -
C/L of Piers to Weld end	G -
	H -
Type of Head	
Tank Capacity	USWG
Tank Weight	estimated
Tank Shell	
Tank Head	
Pier Type (Concrete / saddles / Flat ) <span style="float: right;"><b>Concrete</b></span>	
Tank Saddles <b>N/A</b>	
Information taken by:	<b>Buddy Souto</b>
Date:	
Tank Location	↔ ↔







Inches from Head Seam

Code Plate

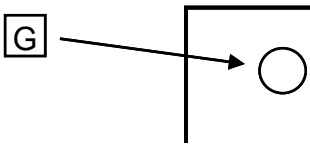
U-1 on hand      Y/N  
 Heat Treat        Y/N  
 X-Ray                Y/N

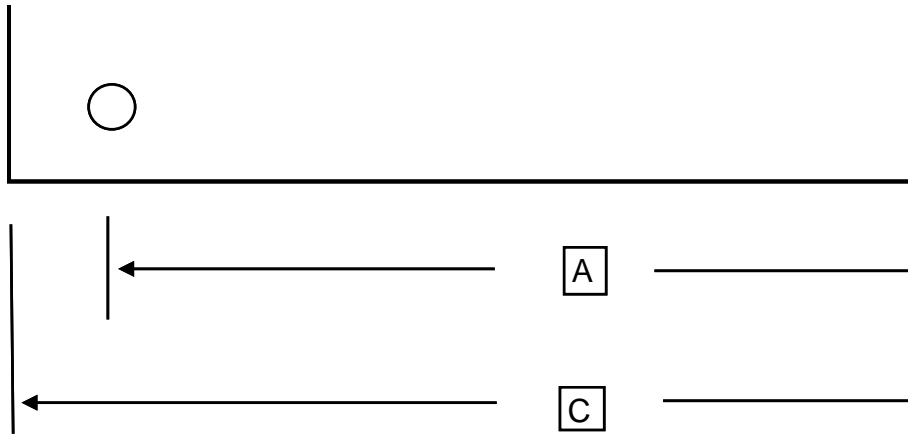
**Tank Openings**

**Tank Detail**

No	Size	Type	Description	
1				Manufacturer:
2				Date of manufacture
3				
4				Working Pressure
5				National Board Number
6				Serial Number
7				Steel Type:
8				
9				Jurisdiction #
10				Pressure Gauge
11				Liquid Level Gauge
12				
13				Paint Condition:
14				Color:
15				
16				Relief Valve Type
17				Test Date

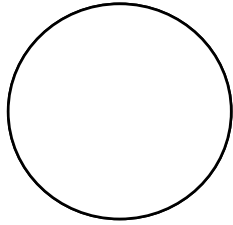
Steel Saddle Footprint Sketch





		Number of bolt holes	<b>n/a</b>
A		Center to center of bolt holes	<b>n/a</b>
B		Center to center of bolt holes	<b>n/a</b>
C		Outside plate dimension	<b>n/a</b>
D		Outside plate dimension	<b>n/a</b>
E		Center of hole to edge of plate	<b>n/a</b>
F		Center of hole to edge of plate	<b>n/a</b>
G		Bolt Hole Diameter	<b>n/a</b>
		Bottom of Foot Plate to Shell	n/a

# Manway Cover Detail



Outside Dia	n/a
No of bolts:	n/a
Bolt length:	n/a
Bolt dia.:	n/a
Nom. size:	
Rating:	
Type:	

S

Description	Dimensions
O/A Length	A -
Length - weld to weld	B -
O. D.	C -
Weld to End	D -
Width of Piers	E -
C/C of Piers	F -
C/L of Piers to Weld end	G -
	H -
Type of Head	
Hemi	
Tank Capacity	USWG
Tank Weight	estimated
Tank Shell	
Tank Head	
Pier Type (Concrete / saddles / Flat )	
<b>Concrete</b>	
Tank Saddles	
Information taken by:	
Date:	
Tank Location	

