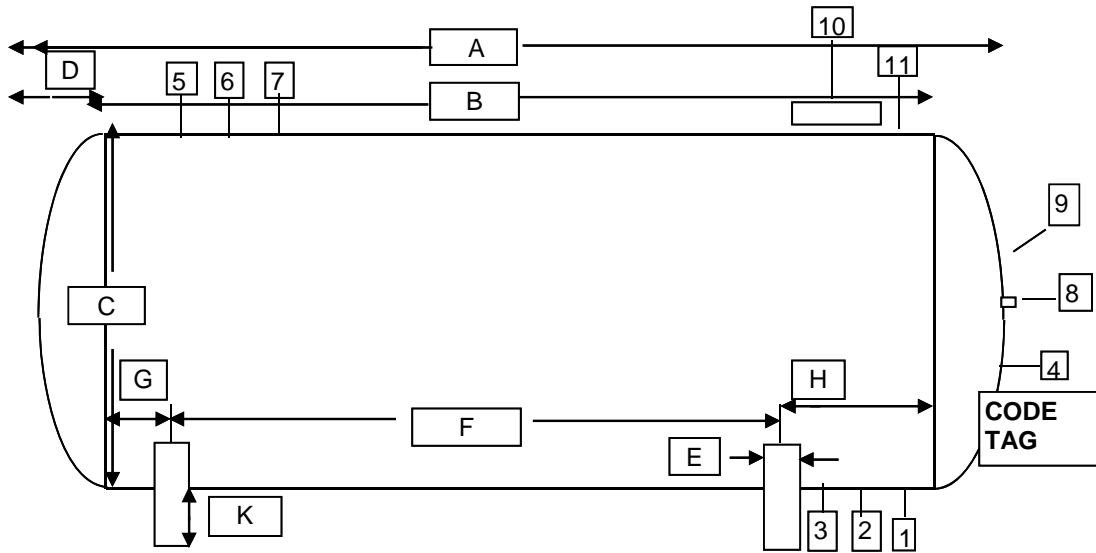


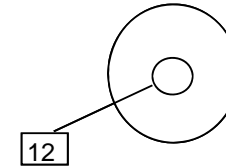
# Total Energy Corp

## Tank Sketch of field Informations



No U-1 on hand

### Manway Cover Detail



No of bolts:	16
Bolt length:	
Bolt diamet:	1"
C/C of studs:	
Circle:	21 1/4"
Nom size:	16"
Rating:	150#

Description		Dimensions	
O/A Length	A -	46' 9 1/2"	
Length - weld to weld	B -	35' 9"	
Diameter of Tank O. D.	C -	131.875	
Weld to End	D -	5'5"	
Width of Piers	E -	16"	
C/C of Piers	F -	23'5"	
C/L of Piers to Weld end	G -		
	H -		
Ht. Of tank above grade	K -		

Tank Openings				Tank Details			
No	Size	Type	Description				
1	3"	NPT	6" Liquid	Manufacture:	Riley - Beaird		
2	3"	NPT	24" Liquid	Date of man.	May-73		
3	2"	NPT	42" Vapor	Retest Date:		Tank Capacity	USWG 30
4	3/4"	NPT	in head Thermometer	Working Pressure	250# @ 100F	Tank Weight	48,100
5	2"	NPT	12" Possible internal relief	NB #	1091	Tank Shell	0.8125
6	2"	NPT	24" Possible internal relief	Serial #	101735-01-2	Tank Head	0.46875
7	2"	NPT	36" Possible internal relief	Steel Type:			
8	2 1/2"	NPT	in head Magnetic Gauge	ASME # :		Pier Type (Concrete / saddles / f concrete)	
9	1/4"	NPT	in head 85% and pressure gauge	Provincial #		Tank Saddles concrete	
10	16"	FLG	36" 150# Manway - 7" high	Fixed Liquid Level gauge			
11	2"	NPT	12" extra coupling	Float Gauge:			
12	3"	FLG	in cover Multiport flange in Manway cover	Thermometer			
13				Paint Condition:	NEW		
14				Color:	Desert Tan		
15				<b>Relief Valves</b>	NONE	Information taken by:	Gary Moser
16				Multi Port or Screwed	Either	Date:	
17				Test Date		<b>Tank Location</b>	Green River Utah